

Shank-type cutters with exchangeable plates



Shank-type cutters
with exchangeable
plates

In addition to the items directory tools made to individual order.

The term of up to two weeks.

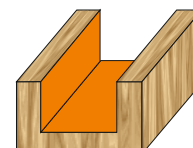
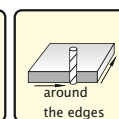
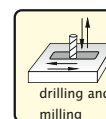
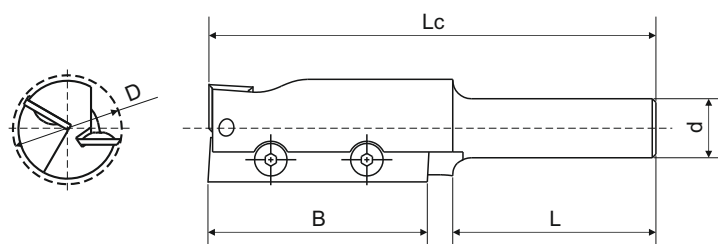
tel.: (+48)12 276 33 51

e-mail: sekretariat@frezwid.com.pl

Handwriting practice area with 20 sets of dashed lines.

9000

Straight cutter $z=1+1$



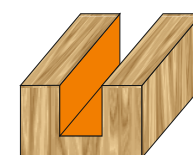
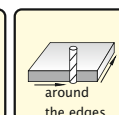
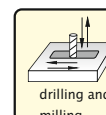
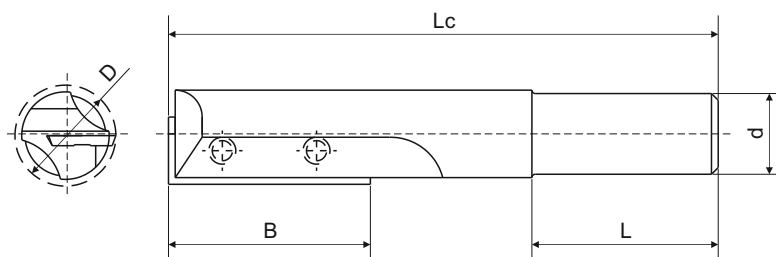
Description of products:

- milling of grooves
- milling in solid wood and wood-based materials
- intended for router machines and CNC machining centres

mm	mm	mm	mm	mm
80 – 160	30 – 60	50 – 100	$\phi 18 - \phi 25$	$\phi 10 - \phi 25$

9001

Straight cutter $z=1$



Description of products:

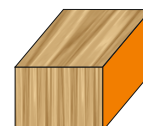
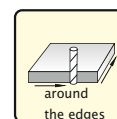
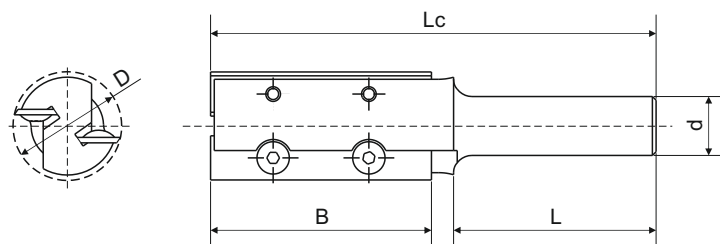
- milling of grooves
- milling in solid wood and wood-based materials
- intended for router machines and CNC machining centres

mm	mm	mm	mm	mm
70 – 150	20 – 50	50 – 100	$\phi 15 - \phi 19$	$\phi 10 - \phi 25$

In addition to the items directory tools made to individual order.
The term of up to two weeks.

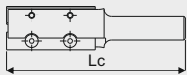
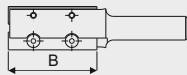
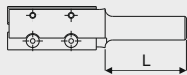

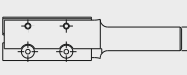
Straight side cutter

9002



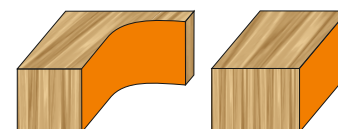
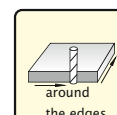
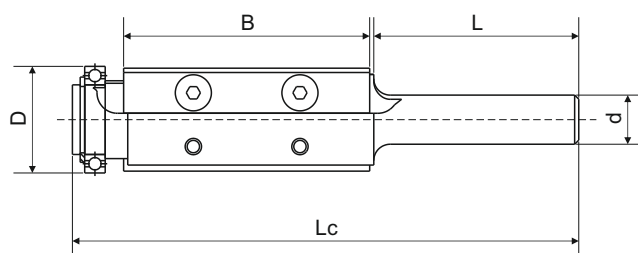
Description of products:

- hobbing
- milling in solid wood and wood-based materials
- intended for router machines and CNC machining centres

				
mm	mm	mm	mm	mm
80 – 180	15 – 60	50 – 100	$\phi_{\min 26}$	$\phi 12 - \phi 25$

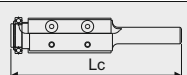
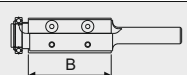
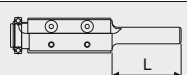
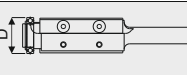
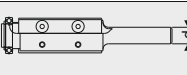
Straight side cutter with a bearing

9003



Description of products:

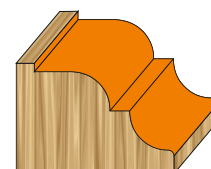
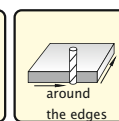
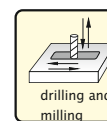
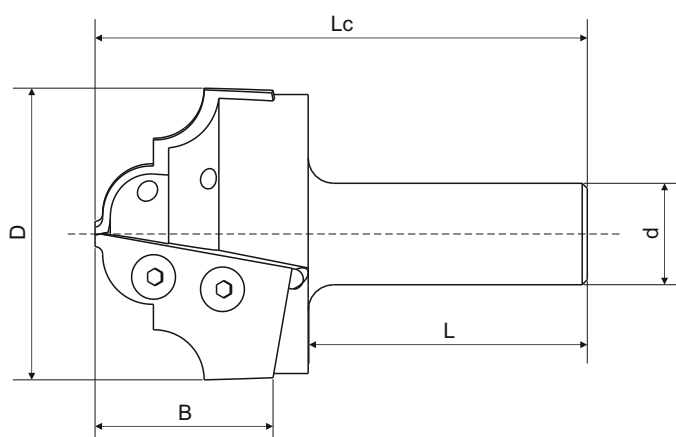
- hobbing
- milling in solid wood and wood-based materials
- intended for router machines and CNC machining centres

				
mm	mm	mm	mm	mm
90 – 170	30 – 60	50 – 100	$\phi_{\min 26}$	$\phi 12 - \phi 25$

In addition to the items directory tools made to individual order.
The term of up to two weeks.

Profile cutter

9004



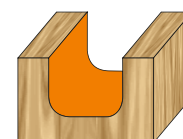
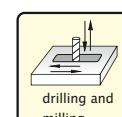
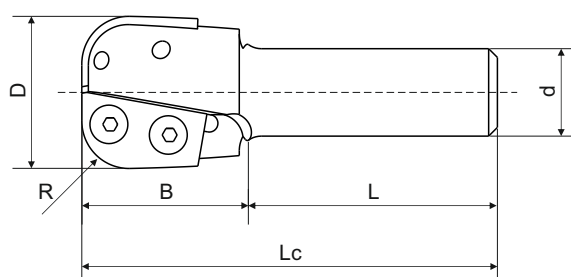
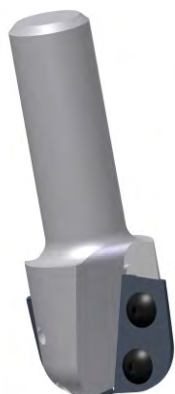
Description of products:

- hobbing and drilling
- milling in solid wood and wood-based materials
- intended for router machines and CNC machining centres

mm	mm	mm	mm	mm
80 – 160	30 – 60	30 – 100	$\phi_{\max 80}$	$\phi 10 - \phi 25$

Profile cutter

9005



Description of products:

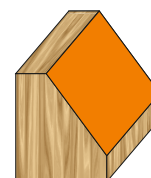
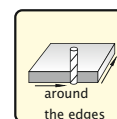
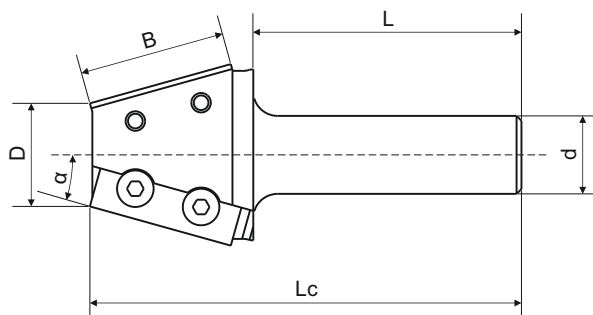
- hobbing and drilling
- milling in solid wood and wood-based materials
- intended for router machines and CNC machining centres

mm	mm	mm	mm	mm	mm
80 – 160	50 – 100	30 – 60	1 – 25	$\phi_{\max 60}$	$\phi 12 - \phi 25$

In addition to the items directory tools made to individual order.
The term of up to two weeks.

Bevel edge trimming cutter

9006



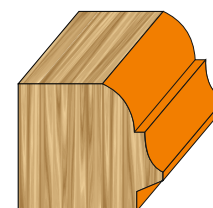
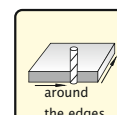
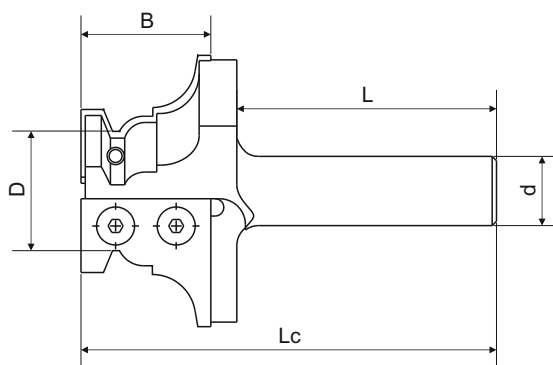
Description of products:

- hobbing
- milling in solid wood and wood-based materials
- intended for router machines and CNC machining centres

mm	mm	mm	mm	mm	mm
80 – 160	30 – 60	50 – 100	$\phi_{\min 22}$	$\phi 16 - \phi 25$	1 – 45

Profile cutter

9007



Description of products:

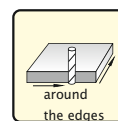
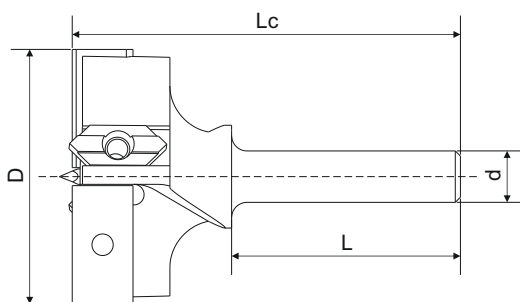
- shape hobbing
- milling in solid wood and wood-based materials
- intended for router machines and CNC machining centres

mm	mm	mm	mm	mm
80 – 160	30 – 60	50 – 100	$\phi_{\min 26}$	$\phi 16 - \phi 25$

In addition to the items directory tools made to individual order.
The term of up to two weeks.

Hinge boring drill with centre point

9008



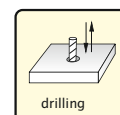
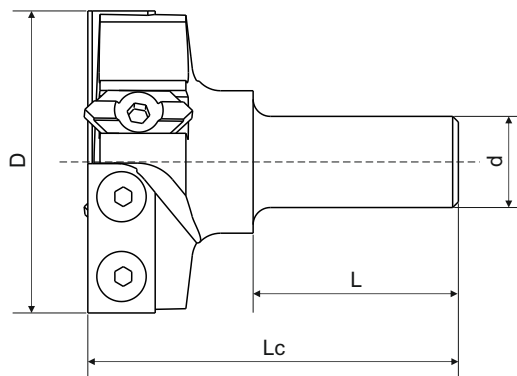
Description of products:

- drilling hinge holes
- milling in solid wood and wood-based materials
- intended for router machines and CNC machining centres

mm	mm	mm	mm
62 – 110	30 – 80	$\phi 34 - \phi 80$	$\phi 12 - \phi 25$

Hinge boring drill

9009



Description of products:

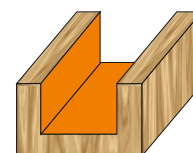
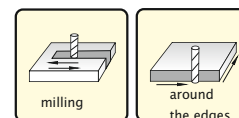
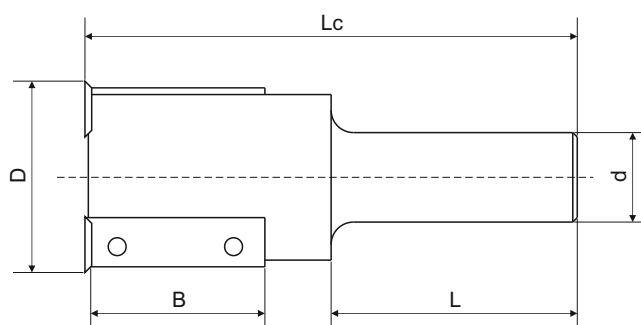
- drilling hinge holes
- milling in solid wood and wood-based materials
- intended for router machines and CNC machining centres

mm	mm	mm	mm
62 – 110	30 – 80	$\phi 34 - \phi 80$	$\phi 12 - \phi 25$

In addition to the items directory tools made to individual order.
The term of up to two weeks.

Straight cutter $z=2+2$

9010



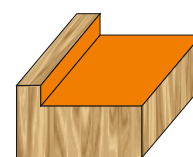
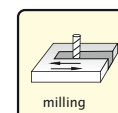
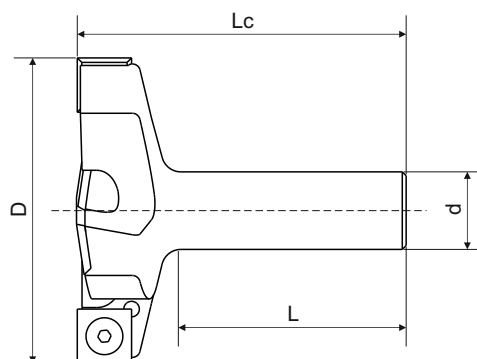
Description of products:

- milling of grooves
- milling in solid wood and wood-based materials
- intended for router machines and CNC machining centres

mm	mm	mm	mm	mm
80 – 200	15 – 80	50 – 100	$\phi 40 - \phi 60$	$\phi 20 - \phi 25$

Surface planning cutter

9011



Description of products:

- milling of grooves, surface planning
- milling in solid wood and wood-based materials
- intended for router machines and CNC machining centres

mm	mm	mm	mm
80 – 130	50 – 100	$\phi 80 - \phi 120$	$\phi 20 - \phi 25$

In addition to the items directory tools made to individual order.
The term of up to two weeks.

Side milling cutters with exchangeable plates



Side milling cutters
with exchangeable
plates

In addition to the items directory tools made to individual order.

The term of up to two weeks.

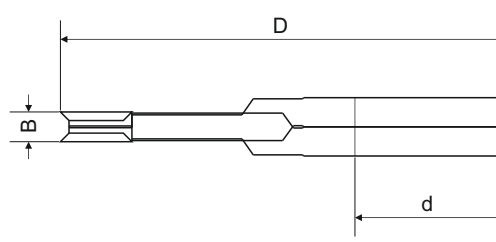
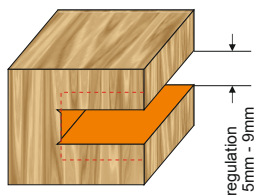
tel.: (+48)12 276 33 51

e-mail: sekretariat@frezwid.com.pl

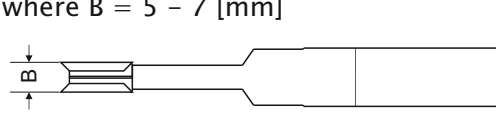
Handwriting practice area with 20 sets of dashed lines.

Straight cutter with spurs, adjustable, for grooves

9020



There is also an option without regulation, where $B = 5 - 7$ [mm]



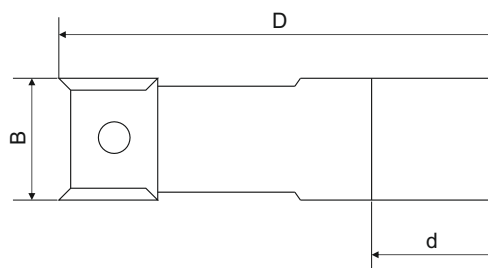
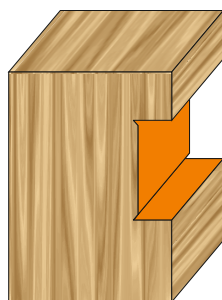
Description of products:

- milling of grooves
- intended for router machines and CNC machining centres

			z - number of teeth
mm	mm	mm	szt.
$\phi 150 - \phi 220$	$\phi 22 - \phi 60$	4,5 - 7	2+2

Straight cutter with spurs

9025



Steel or aluminum body

Description of products:

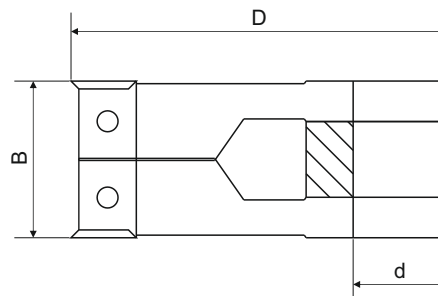
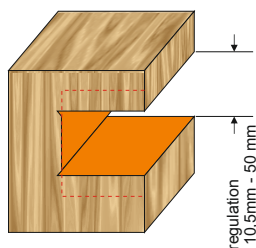
- milling in solid wood and wood-based materials
- intended for spindle molders and CNC machining centres

			z - number of teeth	v - ilość nacinaków
mm	mm	mm	szt.	szt.
$\phi 80 - \phi 320$	$\phi 20 - \phi 60$	8 - 80	2 - 4	2 - 4

In addition to the items directory tools made to individual order.
The term of up to two weeks.

Straight cutter with spurs and groove width adjustment

9030



Steel or aluminum body

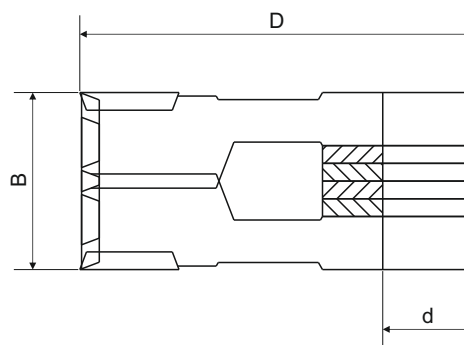
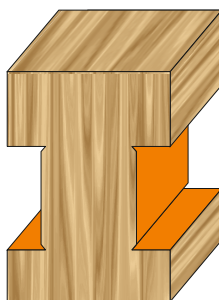
Description of products:

- milling of grooves
- intended for router machines and CNC machining centres

			z - number of teeth
mm	mm	mm	szt.
φ120 - φ180	φ20 - φ60	16 - 118	2 - 4

Straight cutter with spurs for corner cuts

9035



Steel or aluminum body

Description of products:

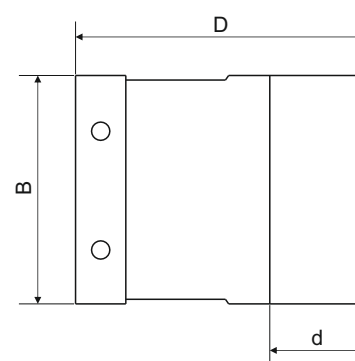
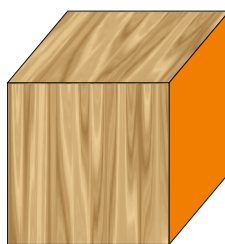
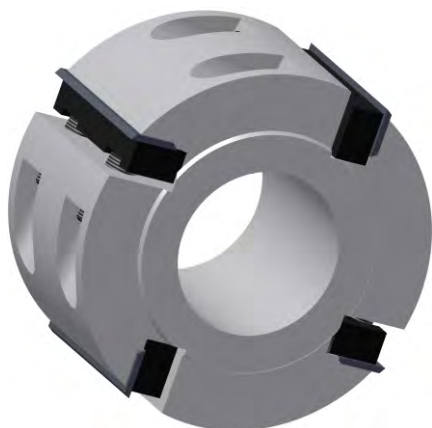
- milling in solid wood and wood-based materials
- intended for router machines and CNC machining centres

			z - number of teeth
mm	mm	mm	szt.
φ200 - φ320	φ30 - φ60	22 - 180	2 - 4

In addition to the items directory tools made to individual order.
The term of up to two weeks.

Straight planerhead

9040



steel or aluminum body

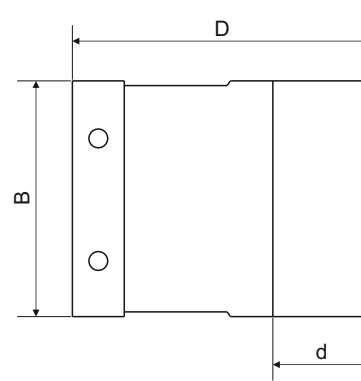
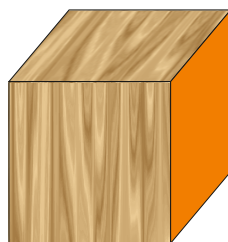
Description of products:

- milling in solid wood and wood-based materials
- intended for router machines and CNC machining centres

			z - number of teeth
mm	mm	mm	szt.
φ80 - φ160	φ20 - φ60	20 - 80	2 - 4

Planer head with λ blade angle

9041



steel or aluminum body

Description of products:

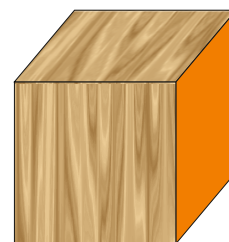
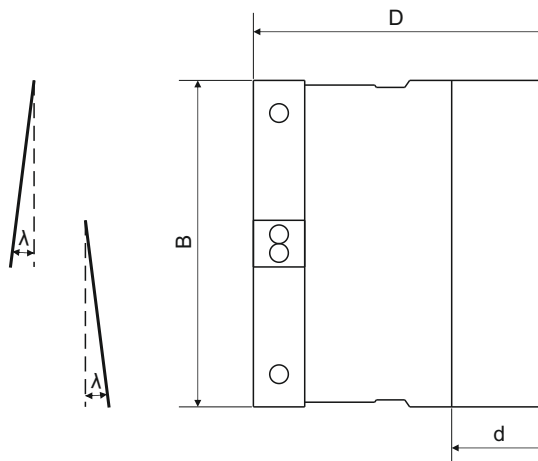
- milling in solid wood and wood-based materials
- intended for router machines and CNC machining centres

			z - number of teeth
mm	mm	mm	szt.
φ80 - φ160	φ20 - φ60	20 - 60	2 - 4

In addition to the items directory tools made to individual order.
The term of up to two weeks.

Planer head with alternate angle blades

9042



Steel or aluminum body

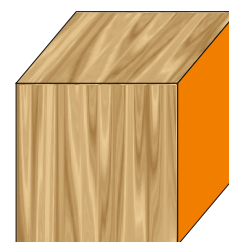
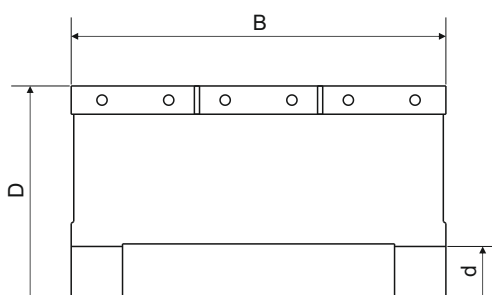
Description of products:

- milling in solid wood and wood-based materials
- intended for router machines and CNC machining centres

			z - number of teeth
mm	mm	mm	szt.
φ80 – φ160	φ20 – φ60	60 – 115	2 – 4

Planer head with multiple knives

9043



Steel or aluminum body

Description of products:

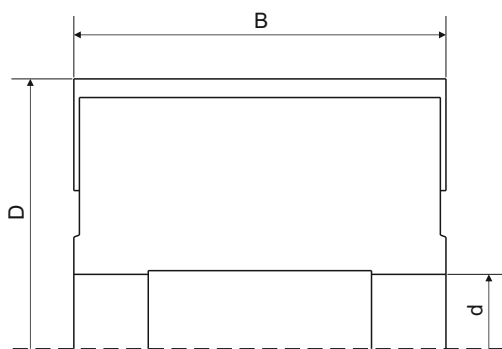
- milling in solid wood and wood-based materials
- intended for router machines and CNC machining centres

			z - number of teeth
mm	mm	mm	szt.
φ80 – φ160	φ20 – φ60	115 – 295	2 – 4

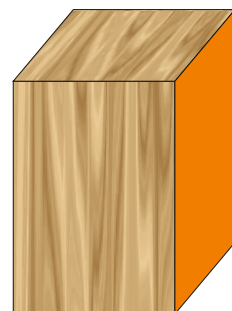
In addition to the items directory tools made to individual order.
The term of up to two weeks.

Planer head with HS knives, 3 mm thick

9045

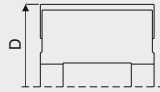
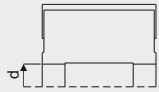
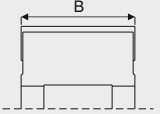


Eject (adjustable) blade with a spring steel or aluminum body



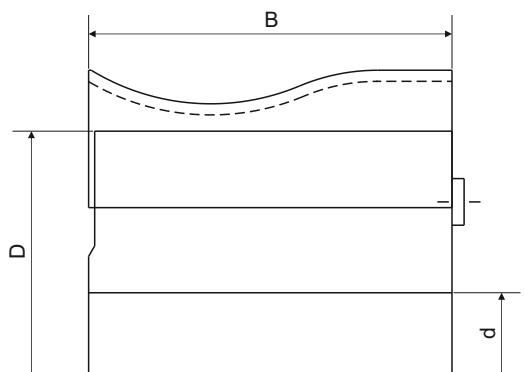
Description of products:

- milling in wood and wood-based materials
- intended for router machines and CNC machining centres

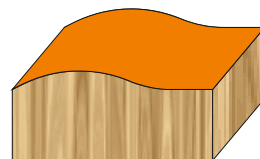
			z - number of teeth
mm	mm	mm	szt.
φ100 – φ160	φ30 – φ60	60 – 295	2 – 6

Multi-purpose planer head with HS knives, 8 mm thick, for profiling

9046

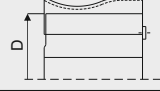
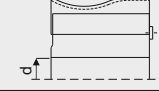
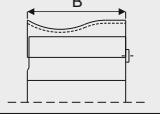


steel body



Description of products:

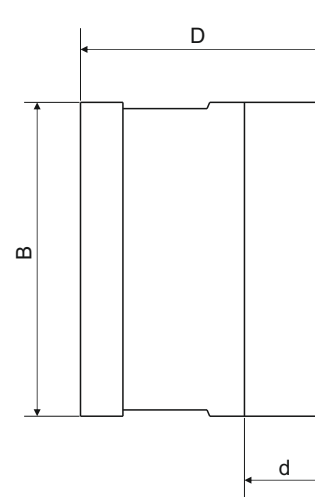
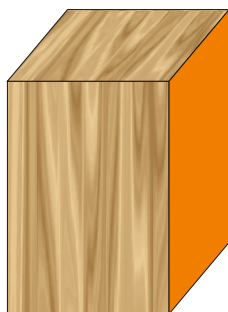
- milling in wood and wood-based materials
- intended for router machines and CNC machining centres

			z - number of teeth
mm	mm	mm	szt.
φ120 – φ160	φ30 – φ60	60 – 295	2 – 4

In addition to the items directory tools made to individual order.
The term of up to two weeks.

Planer head with Centrolock knives

9047



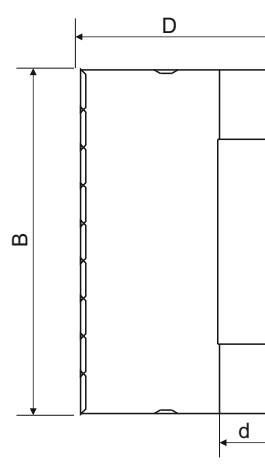
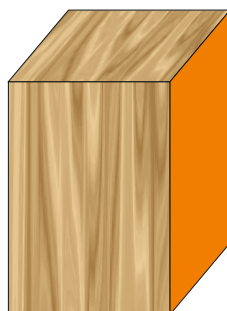
Description of products:

- milling in wood and wood-based materials
- intended for router machines and CNC machining centres

			z - number of teeth
mm	mm	mm	szt.
φ100 – φ160	φ30 – φ60	60 – 295	2 – 6

Spiral cutter head for rough planning

9048

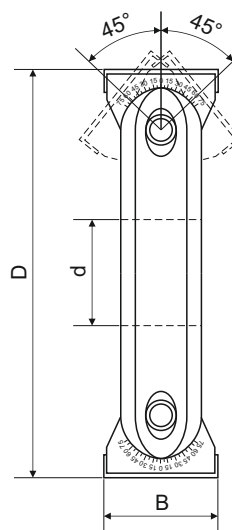
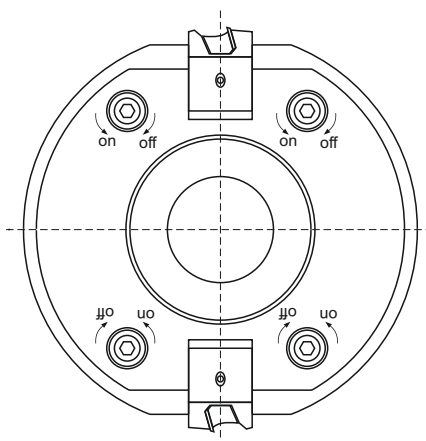


Description of products:

- milling in wood and wood-based materials
- intended for router machines and CNC machining centres

			z - number of teeth
mm	mm	mm	szt.
φ80 – φ160	φ20 – φ60	60 – 295	2 – 6

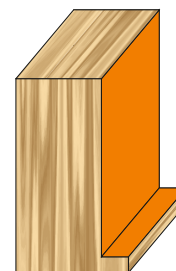
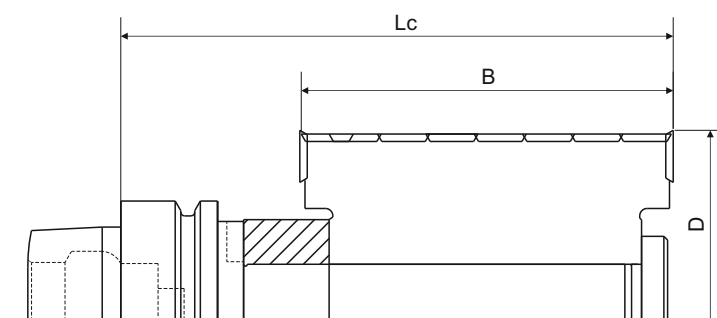
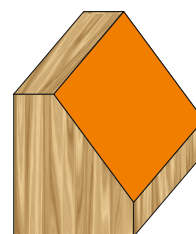
In addition to the items directory tools made to individual order.
The term of up to two weeks.



Description of products:

- milling in wood and wood-based materials
- intended for router machines and CNC machining centres

mm	mm	mm
φ160	φ30	50



Description of products:

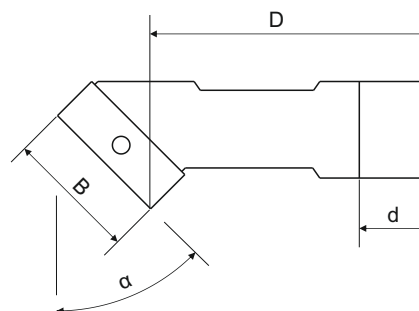
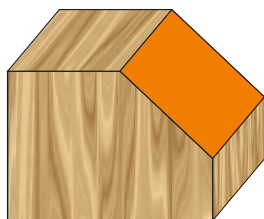
- milling in wood and wood-based materials
- intended for CNC machining centres

			z - number of teeth
mm	mm	mm	szt.
130 - 170	60 - 120	φ80 - φ160	2 - 3

In addition to the items directory tools made to individual order.
The term of up to two weeks.

Angular cutter head

9051



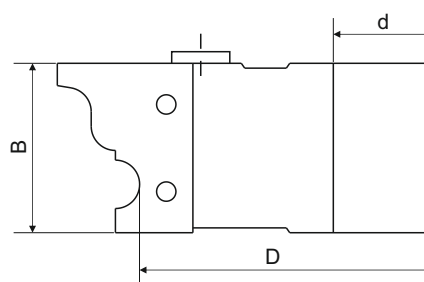
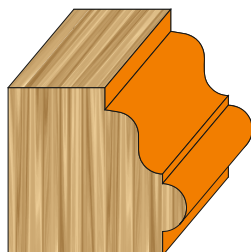
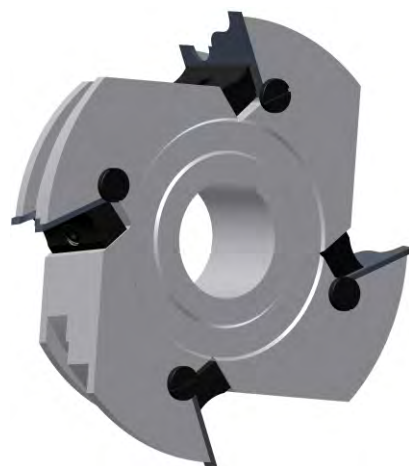
Description of products:

- milling in wood and wood-based materials
- intended for router machines and CNC machining centres

				z - number of teeth
mm	mm	mm	°	szt.
φmin100	φ20 - φ60	20 - 60	1 - 89	2 - 4

Profile cutter

9052



Description of products:

- milling in wood and wood-based materials
- intended for router machines and CNC machining centres

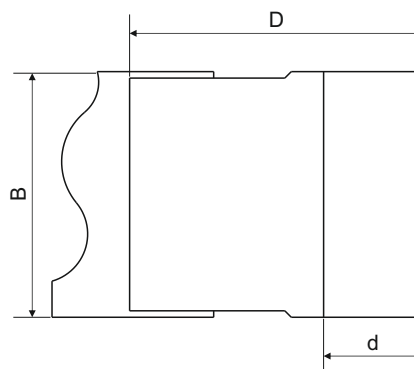
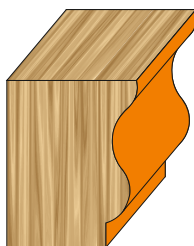
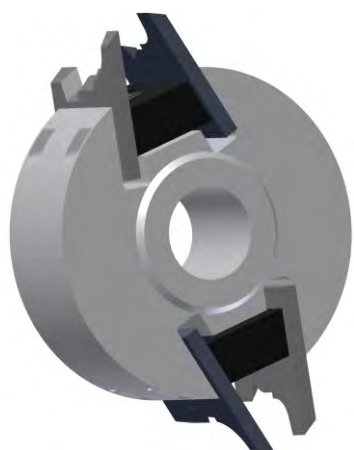
			z - number of teeth
mm	mm	mm	szt.
φmin80	φ20 - φ60	15 - 100	2 - 4

In addition to the items directory tools made to individual order.
The term of up to two weeks.

Side milling cutter with exchangeable plates

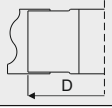
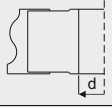
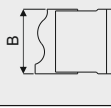
Multi-purpose cutter head with counter plate for HS knives, 4 mm thick

9053



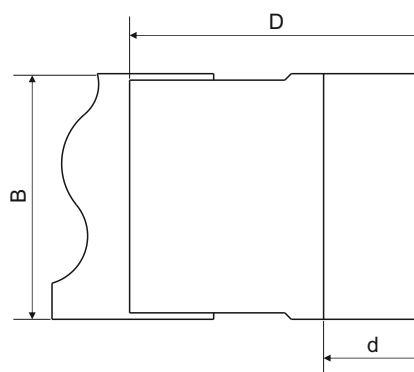
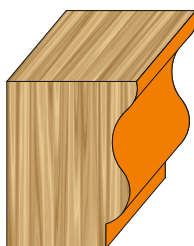
Description of products:

- milling in wood and wood-based materials
- intended for router machines and CNC machining centres

			z - number of teeth
mm	mm	mm	szt.
ϕ_{min96}	$\phi20 - \phi60$	40 - 80	2 - 3

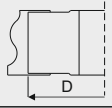
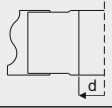
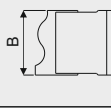
Universal head with knives, 5 mm thick

9054



Description of products:

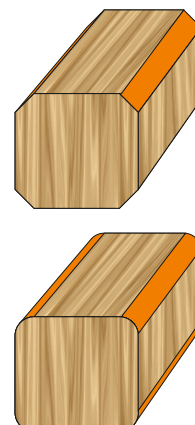
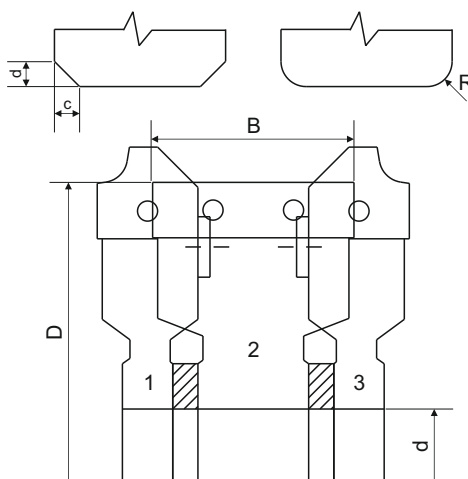
- milling in wood and wood-based materials
- intended for router machines and CNC machining centres

			z - number of teeth
mm	mm	mm	szt.
ϕ_{min90}	$\phi20 - \phi60$	40 - 80	2 - 4

In addition to the items directory tools made to individual order.
The term of up to two weeks.

Profile bevel/round-off cutter head

9060



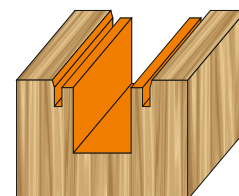
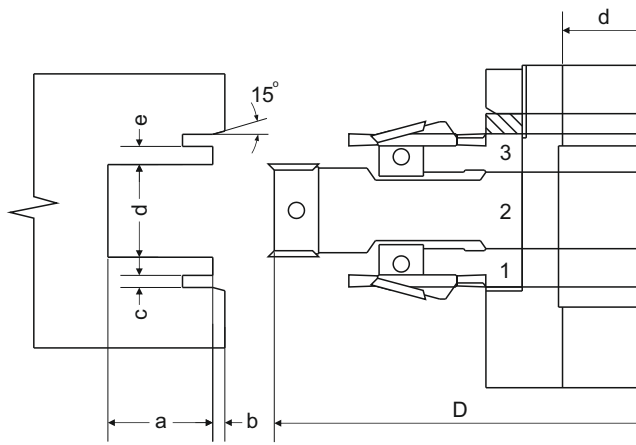
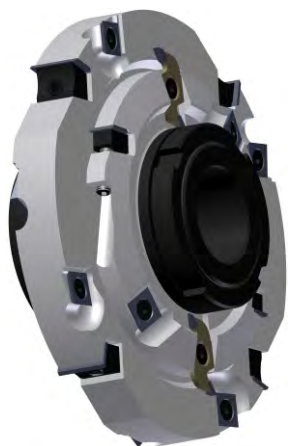
Description of products:

- milling in wood and wood-based materials
- intended for router machines and CNC machining centres

						z - number of teeth
mm	mm	mm	mm	mm	mm	szt.
φ100 - φ160	φ20 - φ60	20 - 60	1 - 8	1 - 8	1 - 8	2 - 4

Cutter head for production of sliding doors

9061



Description of products:

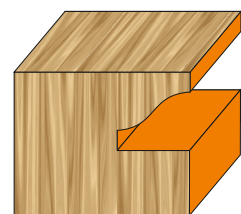
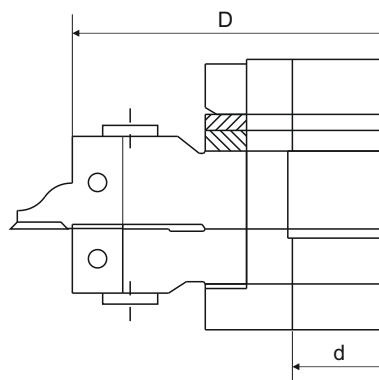
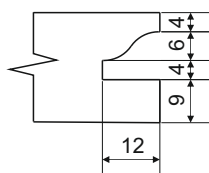
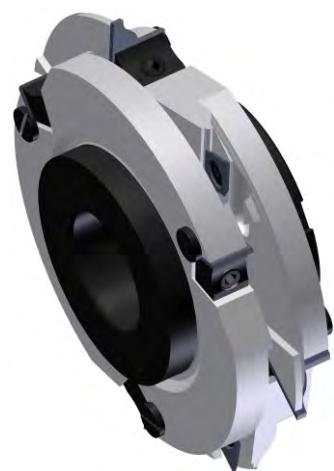
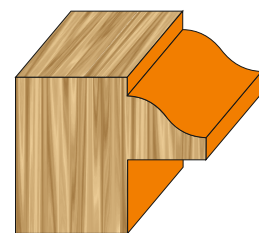
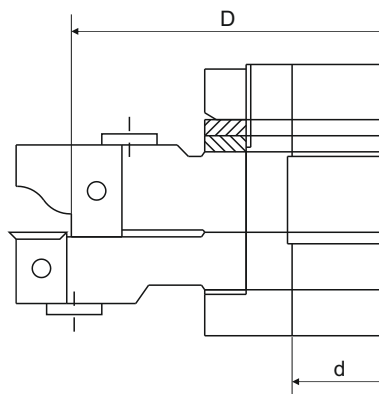
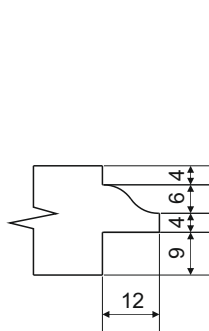
- milling in wood and wood-based materials
- intended for router machines and CNC machining centres

		z - number of teeth
mm	mm	szt.
φ160 - φ250	φ30 - φ50	2 - 3

In addition to the items directory tools made to individual order.
The term of up to two weeks.

Set of cutter heads for production of furniture doors (profile and counter profile)

9070

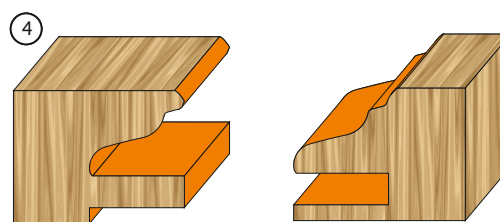
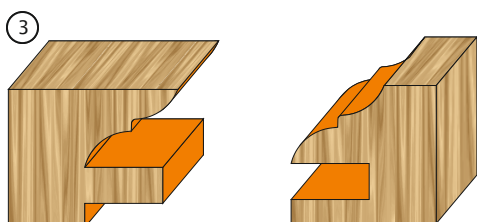
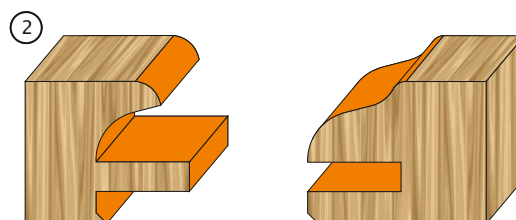
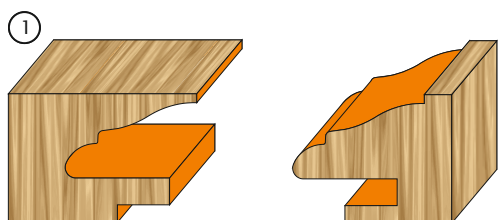


		z - number of teeth
mm	mm	szt.
ϕ_{min90}	$\phi30 - \phi50$	2 - 3

Description of products:

- milling in wood and wood-based materials
- intended for router machines and CNC machining centres

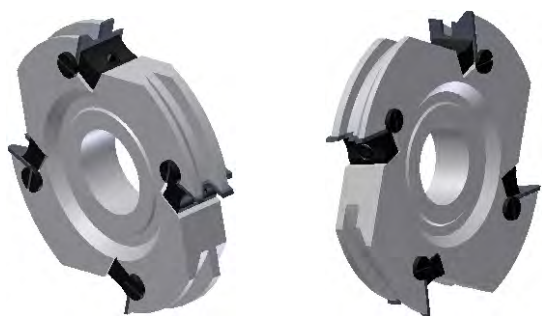
Other examples of cutting patterns:



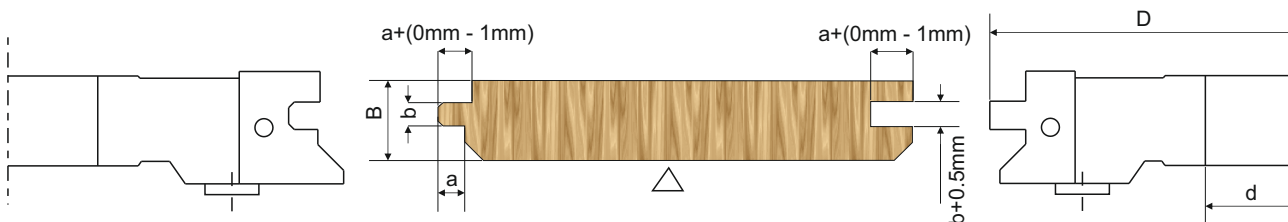
In addition to the items directory tools made to individual order.
The term of up to two weeks.

Set of cutter heads for production of parquet floor/floor boards/wooden panelling

9071



		z - number of teeth
mm	mm	szt.
$\phi 120 - \phi 180$	$\phi 20 - \phi 50$	2 - 4



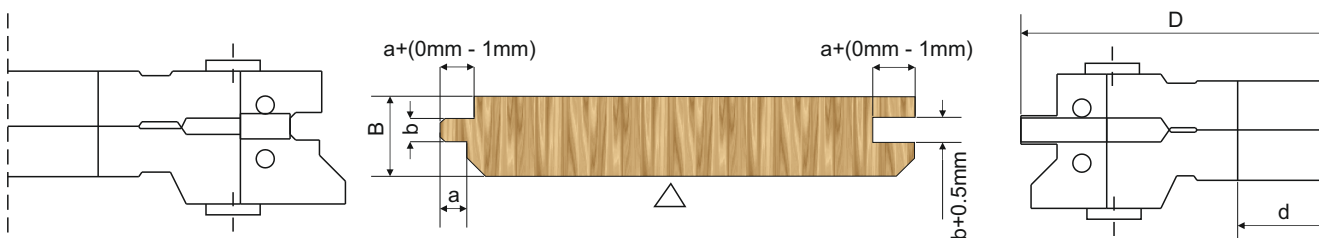
mm	mm	mm
12 - 50	4 - 8	6 - 12

Set of cutter heads for production of parquet floor/floor boards/wooden panelling

9072



		z - number of teeth
mm	mm	szt.
$\phi 120 - \phi 180$	$\phi 20 - \phi 50$	2 - 4

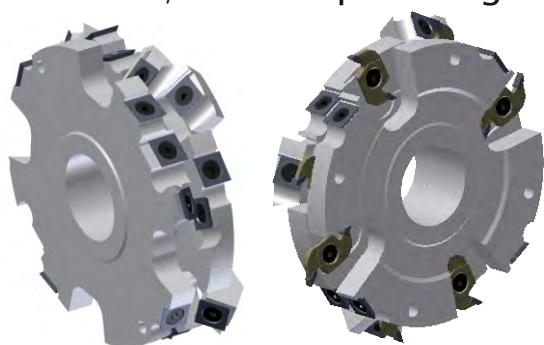


mm	mm	mm
12 - 50	4 - 8	6 - 12

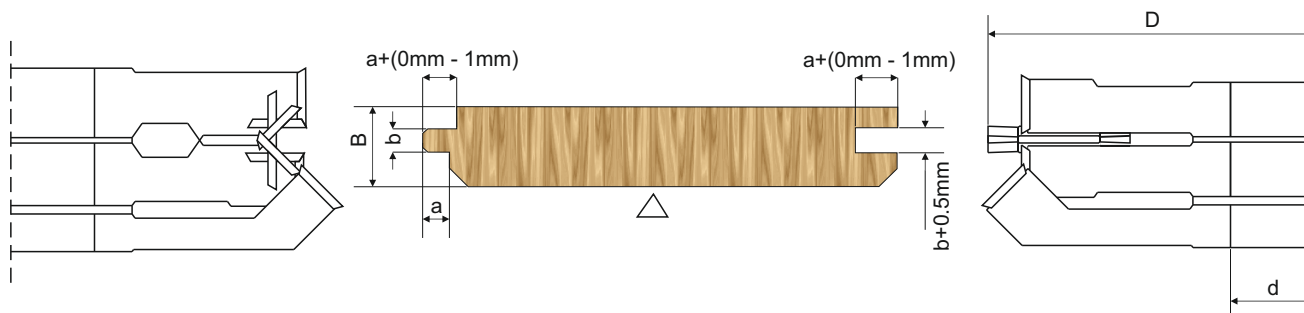
In addition to the items directory tools made to individual order.
The term of up to two weeks.

Set of cutter heads for production of parquet floor/floor boards/wooden panelling

9073



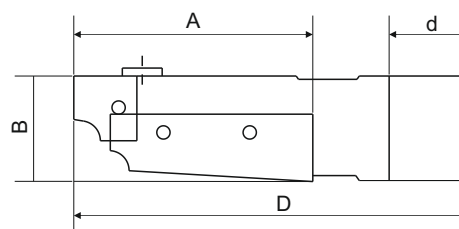
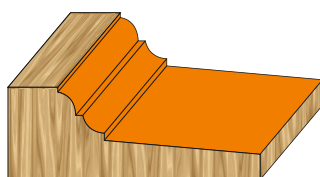
		z - number of teeth
mm	mm	szt.
$\phi 120 - \phi 180$	$\phi 20 - \phi 50$	2 - 4



mm	mm	mm
15 - 30	4 - 6	6

Panel raising cutter head

9080



Description of products:

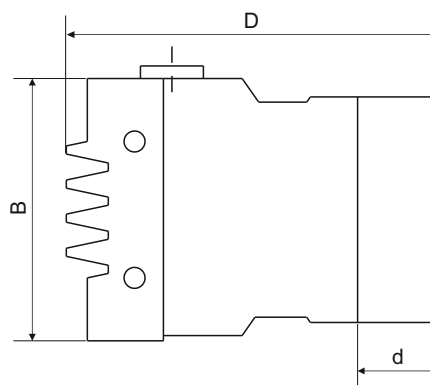
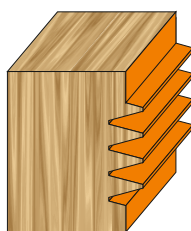
- milling in wood and wood-based materials
- intended for router machines and CNC machining centres

				z - number of teeth
mm	mm	mm	mm	szt.
$\phi 160 - \phi 250$	$\phi 20 - \phi 60$	Bmin30	Amax70	2-3-4 or 2+2 or 3+3

In addition to the items directory tools made to individual order.
The term of up to two weeks.

Cutter head for wedge connections

9090



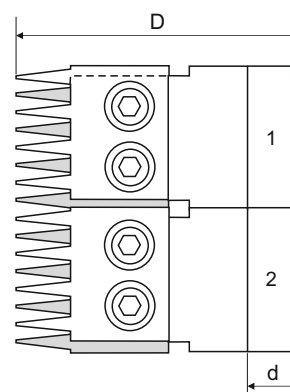
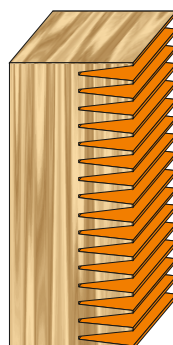
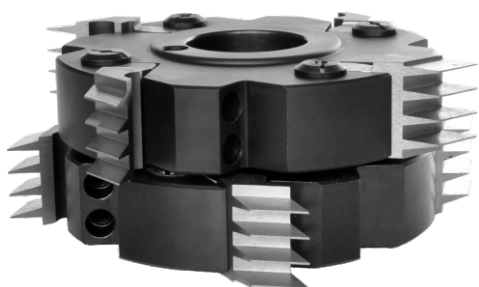
Description of products:

- milling in wood and wood-based materials
- intended for router machines and CNC machining centres

			z - number of teeth
mm	mm	mm	szt.
$\phi 120 - \phi 160$	$\phi 20 - \phi 60$	30 - 100	3 - 4

Cutter head for glued transverse joints

9100



		z - number of teeth
mm	mm	szt.
$\phi 160 - \phi 250$	$\phi 30 - \phi 60$	4 - 6

Description of products:

- milling in wood and wood-based materials
- intended for router machines and CNC machining centres

In addition to the items directory tools made to individual order.
The term of up to two weeks.

Machine parts, spare parts for tools



Machine parts,
spare parts for
tools

In addition to the items directory tools made to individual order.

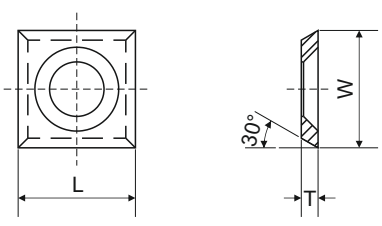
The term of up to two weeks.

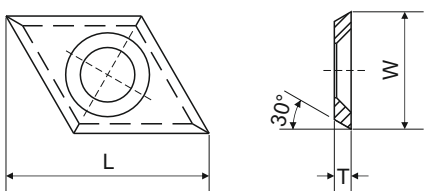
tel.: (+48)12 276 33 51

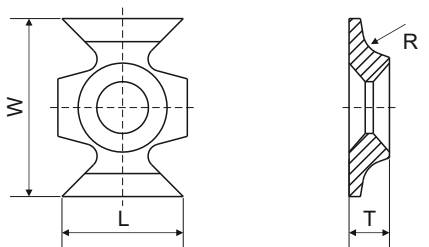
e-mail: sekretariat@frezwid.com.pl

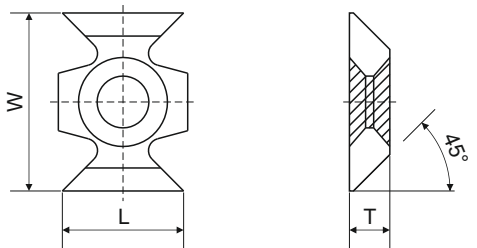
Handwriting practice area with 20 sets of horizontal dashed lines.

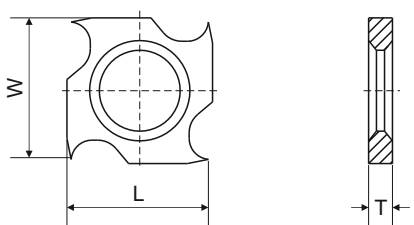
Exchangeable plates

	Designation	L	W	T	C
	L142	14.0	14.0	2.0	-

	Designation	L	W	T	C
	L144	28.0	14.0	2.0	-

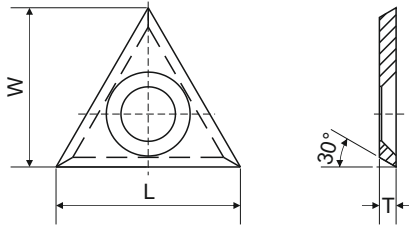
	Designation	L	W	T	R
	FKB-R1.5	16.0	22.0	5.0	1.5
	FKBR3	16.0	22.0	5.0	3

	Designation	L	W	T	R
	FKB-45	16.0	22.0	5.0	-

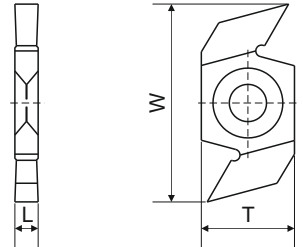
	Designation	L	W	T	C
	NF195	18.0	18.0	1.95	-
	NF245	18.0	18.0	2.45	-
	NF295	18.0	18.0	2.95	-
	NF370	18.0	18.0	3.70	-

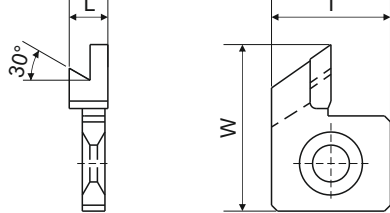
In addition to the items directory tools made to individual order.
The term of up to two weeks.

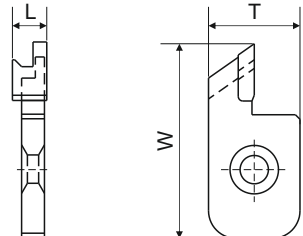
Exchangeable plates

	Designation	L	W	T	C
	L222	22.0	19.0	2.0	-

	Designation	L	W	T	R
	N4	4.0	40.0	20.0	-
	N5	5.0	40.0	20.0	-
	N6	6.0	40.0	20.0	-
	N7	7.0	40.0	20.0	-
	N8	8.0	40.0	20.0	-

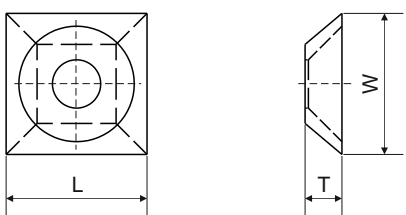
	Designation	L	W	T	R
	N3T	3.0	34.0	16.0	-
	N4T	4.0	34.0	16.0	-
	N5T	5.0	34.0	16.0	-
	N6T	6.0	34.0	16.0	-

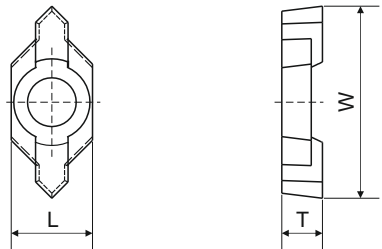
	Designation	L	W	T	R
	N7 usz.	7.0	28.0	20.0	-

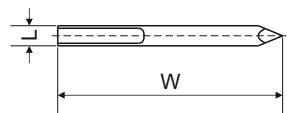
	Designation	L	W	T	R
	N7.5 OP	7.5	42.5	20.0	-

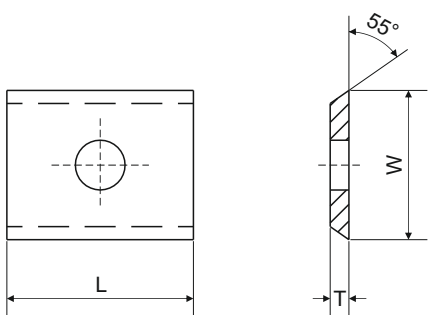
In addition to the items directory tools made to individual order.
The term of up to two weeks.

Exchangeable plates

	Designation	L	W	T	C
	L21x21x5.5	21.0	21.0	5.5	-

	Designation	L	W	T	C
	L189	18.9	8.0	4.0	-

	Designation	L	W	T	C
	W335	3.0	33.5	-	-

	Designation	L	W	T	C
	L7.6	7.6	12.0	1.5	-
	L9.6	9.6	12.0	1.5	-
	L11.6	11.6	12.0	1.5	-
	L15	15.0	12.0	1.5	-
	L15.7	15.7	12.0	1.5	-
	L20	20.0	12.0	1.5	-
	L25	25.0	12.0	1.5	-

Available variants:

- A plaque with a higher hardness carbide labeled M (for example. L7.6M) for the treatment of MDF and wood
- Polished tiles with high hardness carbide marked P (eg. L7.6P) for woodworking

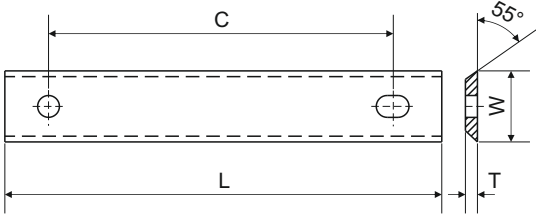
In addition to the items directory tools made to individual order.
The term of up to two weeks.

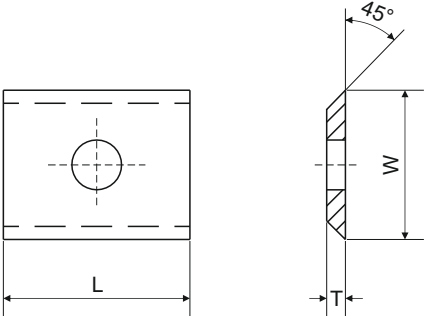
Exchangeable plates

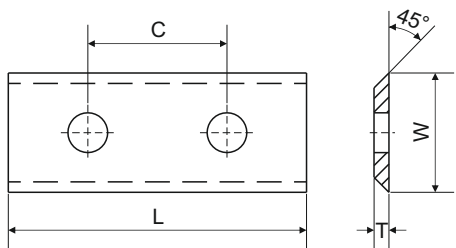
	Designation	L	W	T	C
	L30	30.0	12.0	1.5	5.7
	L40	40.0	12.0	1.5	8.3
	L50	50.0	12.0	1.5	8.3
	L60	60.0	12.0	1.5	12.2

Available variants:

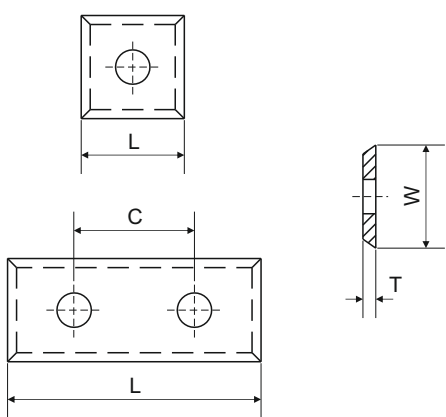
- A plaque with a higher hardness carbide labeled M (for example. L7.6P) for the treatment of MDF
- Polished tiles with high hardness carbide marked P (eg. L7.6K) for woodworking

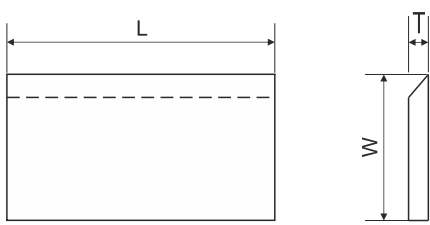
	Designation	L	W	T	C
	L80	80.0	13.0	2.2	32.5
	L100	100.0	13.0	2.2	49.5
	L120	120.0	13.0	2.2	57.4

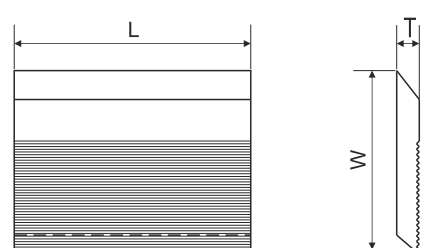
	Designation	L	W	T	C
	L7.6K	7.6	12.0	1.5	-
	L9.6K	9.6	12.0	1.5	-
	L11.6K	11.6	12.0	1.5	-
	L15K	15	12.0	1.5	-
	L15.7K	15.7	12.0	1.5	-
	L20K	20.0	12.0	1.5	-
	L25K	25.0	12.0	1.5	-

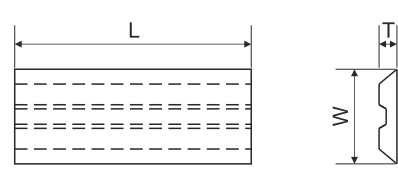
	Designation	L	W	T	R
	L30K	30.0	12.0	1.5	5.7
	L40K	40.0	12.0	1.5	8.3

In addition to the items directory tools made to individual order.
The term of up to two weeks.

	Designation	L	W	T	C
	L12	12.0	12.0	1.5	-
	L19.5	19.5	12.0	1.5	-
	L29.5	29.5	12.0	1.5	14.0
	L39.5	39.5	12.0	1.5	26.0
	L49.5	49.5	12.0	1.5	26.0

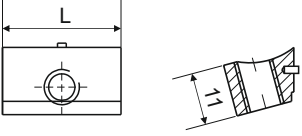
knives HSS/HW	Designation	L	W	T
	60-1000x25x3	60.0 - 1000.0	25.0	3.0
	60-1000x30x3	60.0 - 1000.0	30.0	3.0
	60-1000x35x3	60.0 - 1000.0	35.0	3.0

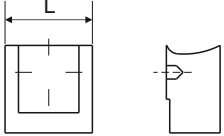
knives HSS/HW	Designation	L	W	T
	60-600x40x8	60.0 - 600.0	40.0	8.0
	60-600x50x8	60.0 - 600.0	50.0	8.0
	60-600x60x8	60.0 - 600.0	60.0	8.0
	60-600x70x8	60.0 - 600.0	70.0	8.0

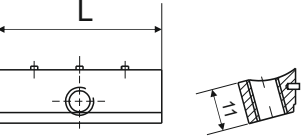
HSS/HW knives for Centrolock cutter heads	Designation	L	W	T
	C60x16x3	60.0	16.0	3.0
	C100x16x3	100.0	16.0	3.0
	C130x16x3	130.0	16.0	3.0
	C180x16x3	180.0	16.0	3.0
	C230x16x3	230.0	16.0	3.0

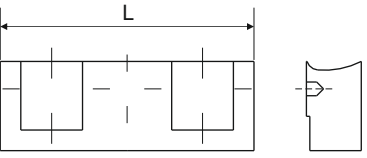
In addition to the items directory tools made to individual order.
The term of up to two weeks.

Clamps

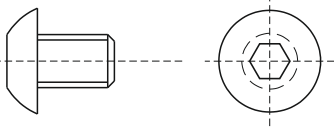
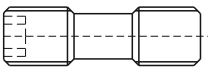
	L	M
	8.0	M6
	10.0	M8
	12.0	M8
	13.0	M6
	14.0	M8
	16.0	M8
	18.0	M8
	22.0	M8

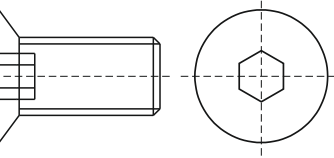
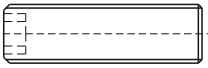
	L
	9.0
	13.0
	18.0
	22.0
	27.0
	32.0

	L	M
	24.0	M8
	27.0	M8
	32.0	M8
	37.0	M8

	L
	37.0
	47.0
	57.0
	76.0
	88.0
	97.0

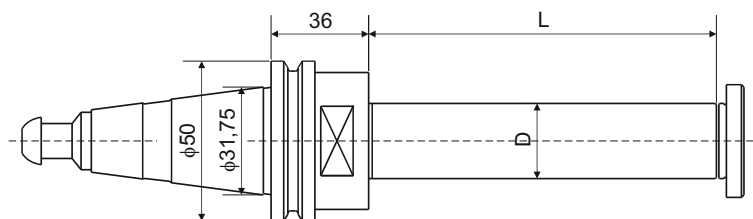
Screws

Screw for shank cutters		Turnbuckle for clamps	
	M4 x 0.7 x 8		M6 x 0,75 x 26 M8 x 1 x 26

Screw for spurs and edge rounding knives		Screw for clamps	
	M6 x 1 x 8 M6 x 1 x 10 M6 x 1 x 15		M8 x 1 x 16 M8 x 1 x 20 M8 x 1 x 25

In addition to the items directory tools made to individual order.
The term of up to two weeks.

ISO 30 (DIN 69871) holder with a fixing pin



Uchwyt z walcem mocującym $\phi 30$

mm	mm
$\phi 30$	80/93/103/123/203

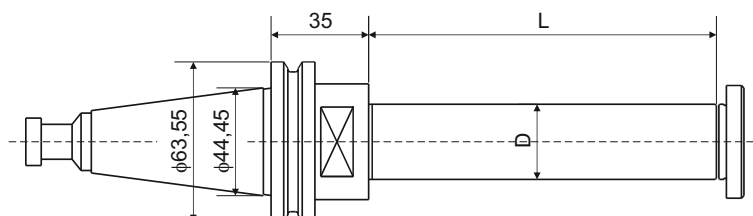
Description of products:

- intended for side milling tools

ISO 30 holders are also available in the following dimensions:

- D - $\varnothing 35$ mm, $\varnothing 40$ mm

ISO 40 (DIN 69871) holder with a fixing pin



Uchwyt z walcem mocującym $\phi 30$

mm	mm
$\phi 30$	80/93/103/123/203

Description of products:

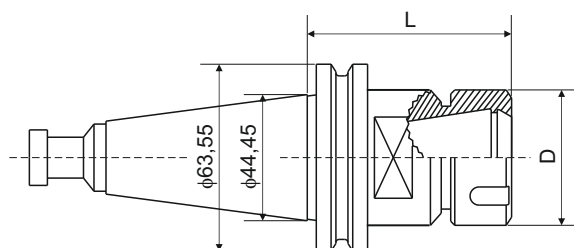
- intended for side milling tools

ISO 40 holders are also available in the following dimensions

- D - $\varnothing 35$ mm, $\varnothing 40$ mm, $\varnothing 63$ mm

In addition to the items directory tools made to individual order.
The term of up to two weeks.

■ ISO 40 (DIN 69871) collet chuck



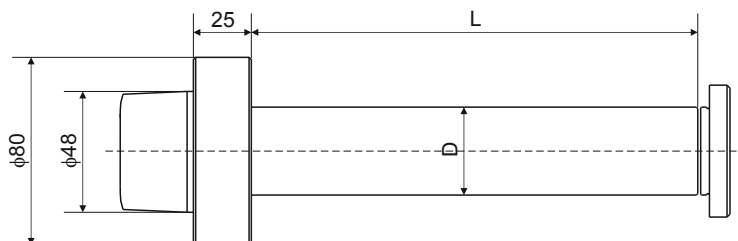
Handle with cap sleeves designed to ER32

mm	mm
φ50	72,5

Description of products:

- intended for shanktools
- for precision collets
ER 32 - 40 (DIN 6499)
ORT 25A

■ A HSK holder with a fixing pin (Weinig - Power Lock)



Handle with fixing roller φ30

mm	mm
φ30	80/93/103/123/203

Description of products:

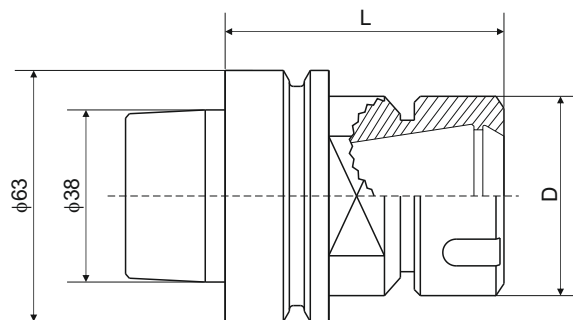
- intended for Weinig - Power Lock machines
- intended for side milling tools

Holders are also available in the following dimensions:

- D - f35 mm, f40 mm, f50 mm

In addition to the items directory tools made to individual order.
The term of up to two weeks.

HSK 63F (DIN 69893) collet chuck



Handle with cap sleeves designed to ER32

mm	mm
φ50	72,5

Description of products:

■ intended for shanktools

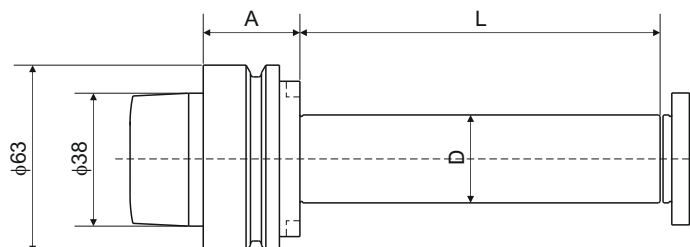
■ for precision collets

ER 16 - 25 - 32 - 40 (DIN 6499)

ORT 25A

TG 75 - 100 - 150

HSK 63F(DIN 69893) grip with a fixing pin



Handle with clamping cylinder φ30

mm	mm	mm
φ30	33 lub 42	80/93/103/123/203

Description of products:

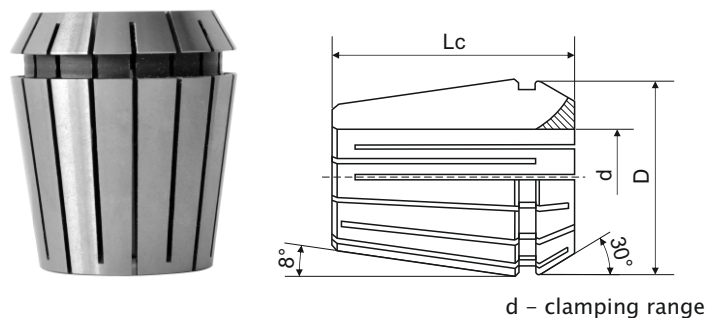
■ intended for side milling tools

HSK 63F holders are also available in the following dimensions:

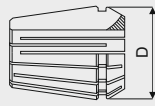
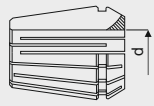
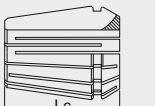
■ D - Ø35 mm, Ø40 mm

In addition to the items directory tools made to individual order.
The term of up to two weeks.

■ Clamping sleeve for tools with a cylinder holder



Collet-type ER32

		
mm	mm	mm
φ33	φ3–φ20	40

Wrenches are also the sleeve types:

- ER 8 – 11 – 16 – 20 – 25 – 32 – 40 (DIN 6499)
- ORT 20 – 25 – 32 (DIN 6388)
- and other on a special order

■ ER wrench for nuts (DIN 6499)



Wrenches are also available in other types:

- a torque wrench
- a torque wrench with a double handle
- a ratchet wrench

■ Mounting pad for tool holders

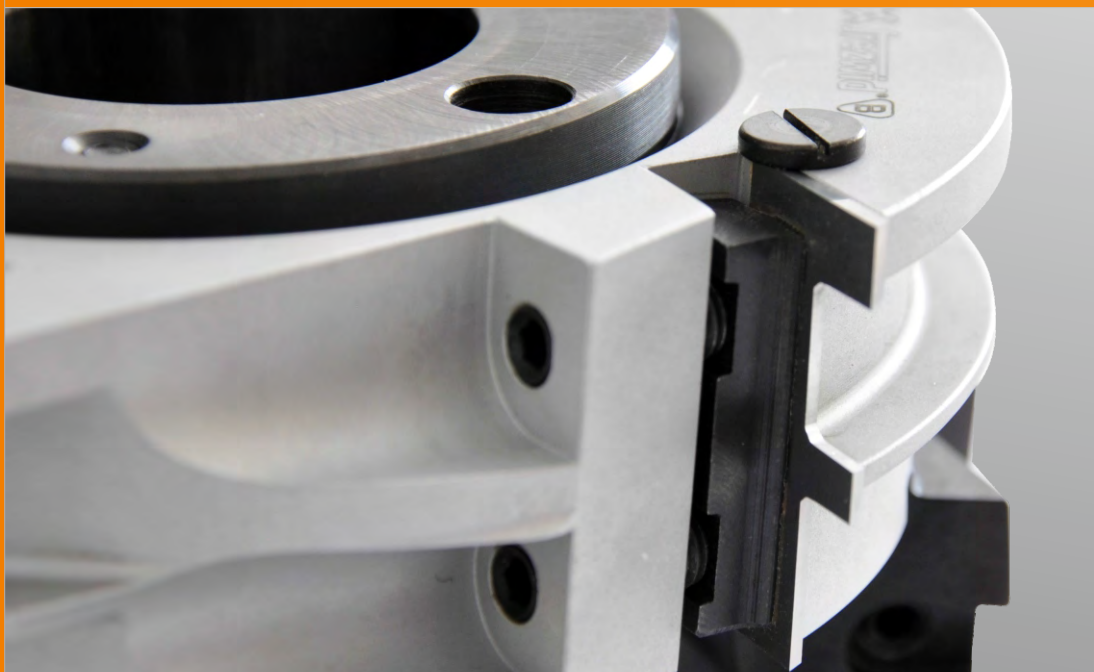


D
mm
Ø50
Ø63
Ø97,5
Ø100
Ø80

Also available holders with collar inclined at an angle 30°

In addition to the items directory tools made to individual order.
The term of up to two weeks.

Heads for windows and doors



Heads for windows
and doors

In addition to the items directory tools made to individual order.

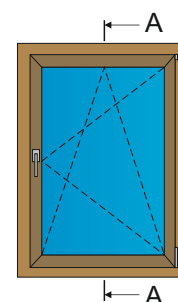
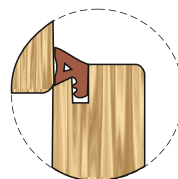
The term of up to two weeks.

tel.: (+48)12 276 33 51

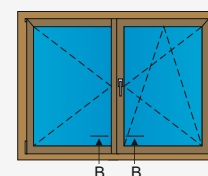
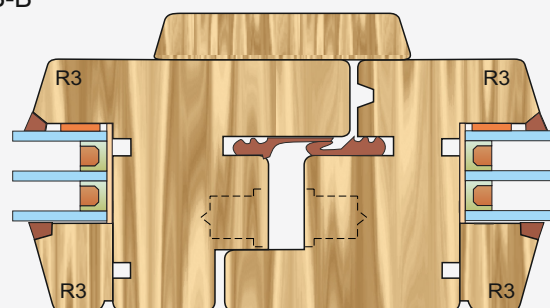
e-mail: sekretariat@frezwid.com.pl

Handwriting practice area with 20 sets of dashed lines.

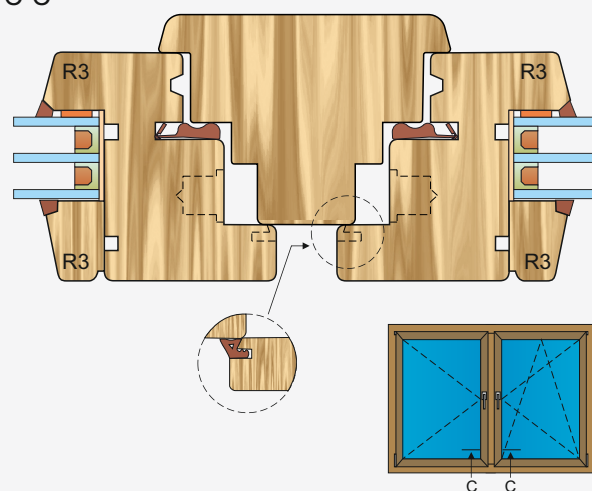
A-A



B-B

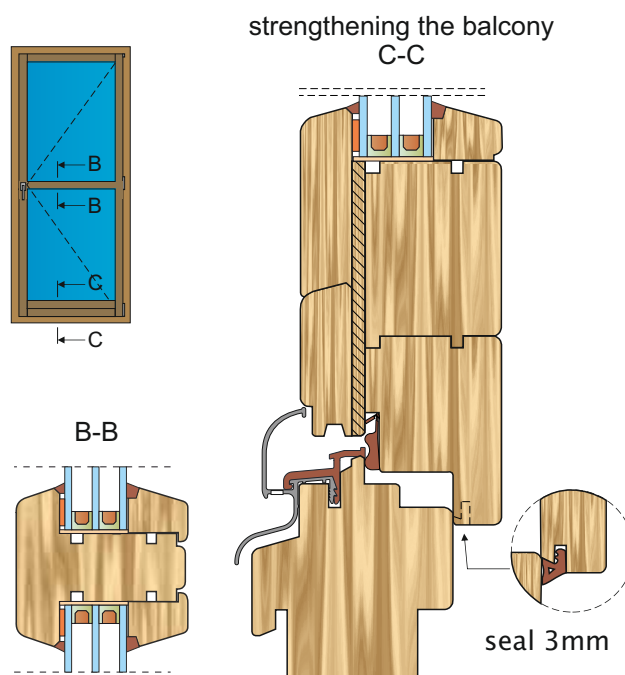
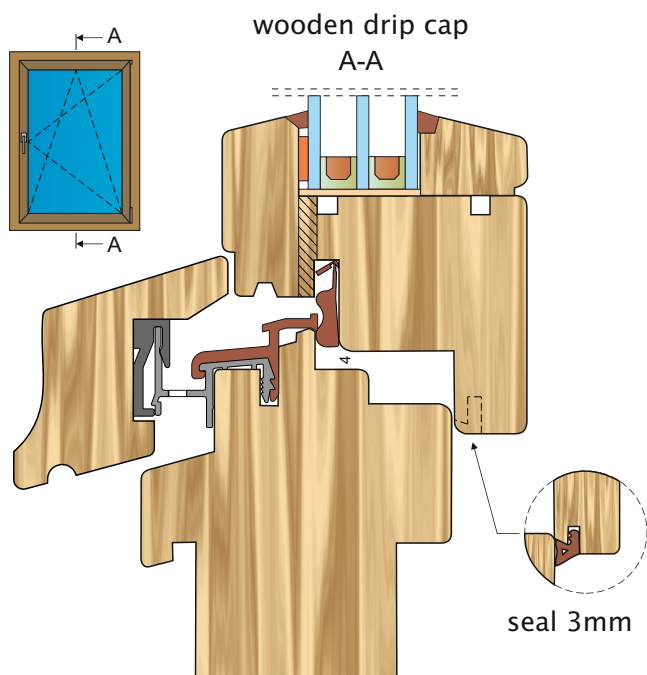


C-C

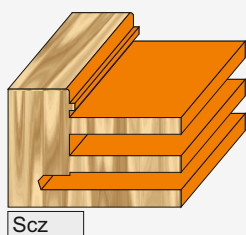
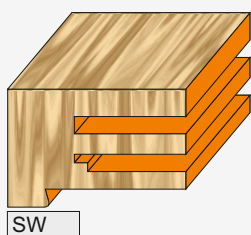
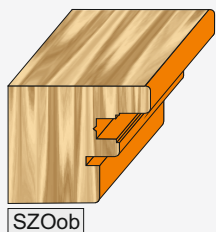
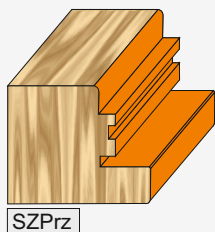
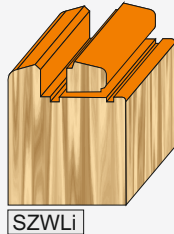
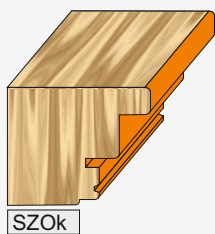
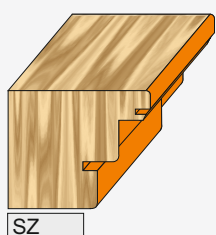
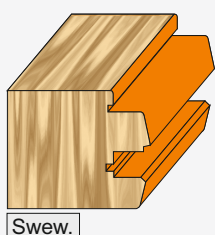


39

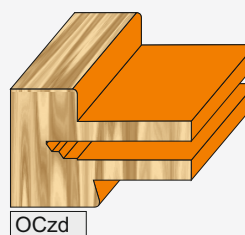
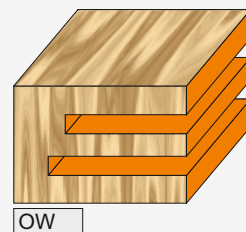
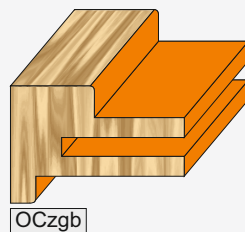
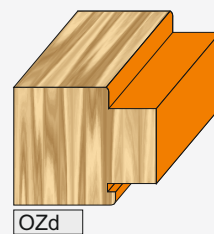
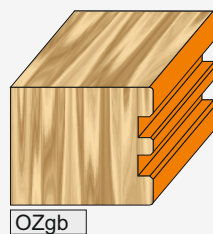
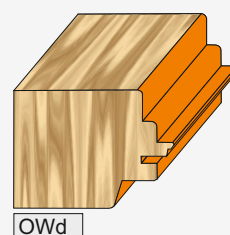
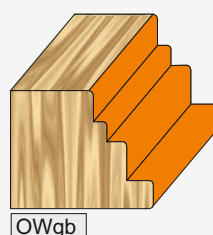
Tolls for Profile Classic R3



Summary profiles for tools – wing



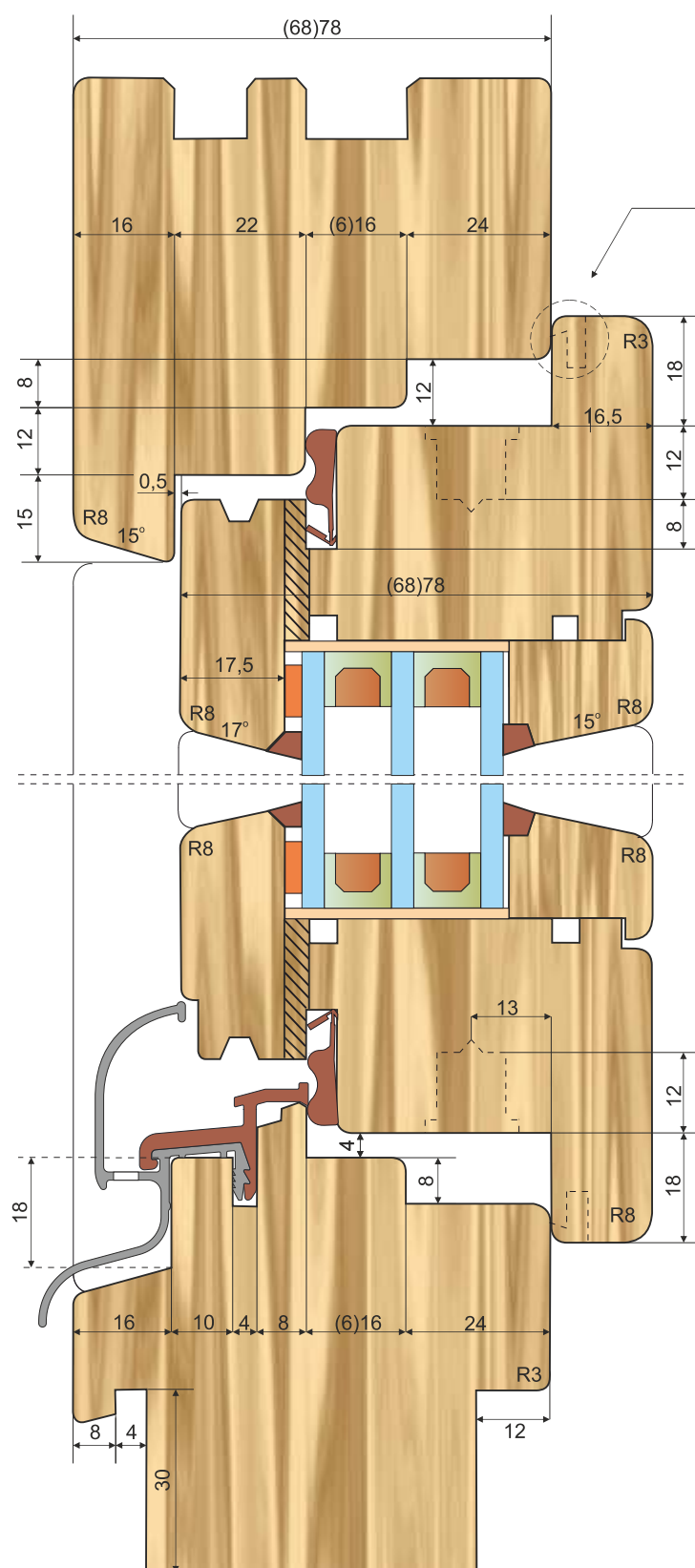
Summary profiles for tools – frame



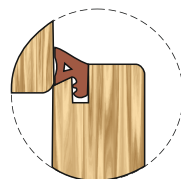
In addition to the items directory tools made to individual order.
The term of up to two weeks.

Tolls for Profile Softline R8

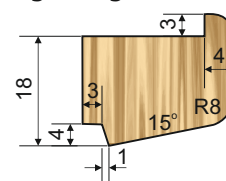
A-A



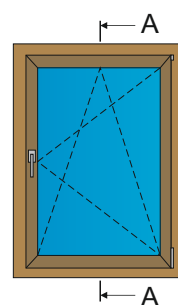
seal 3mm



glazing bead

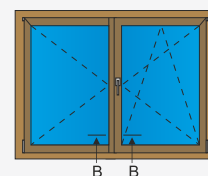
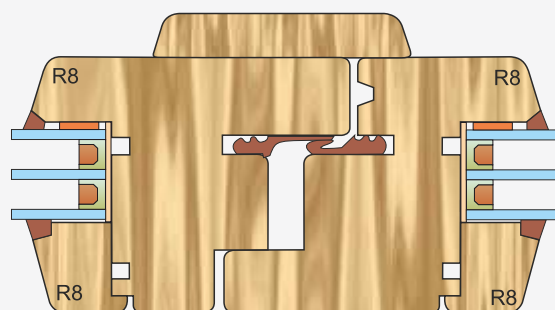


available option



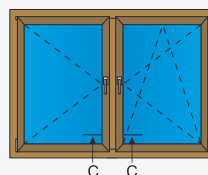
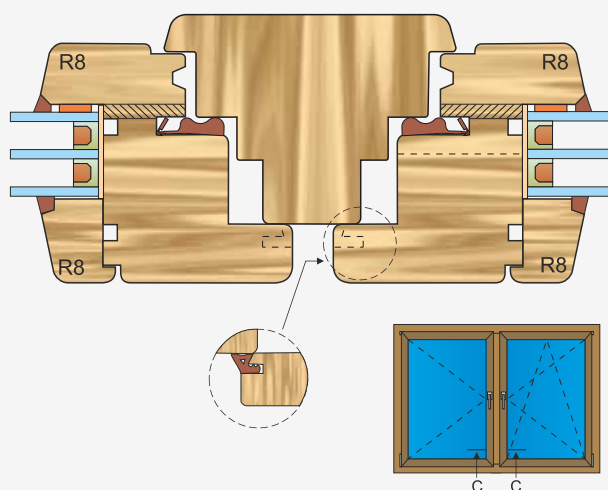
The combination of a window without bars
(closes)

B-B



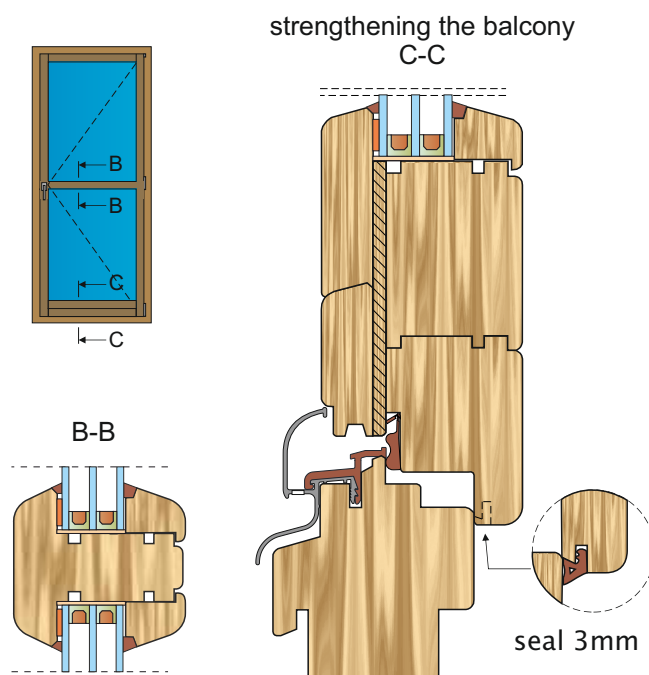
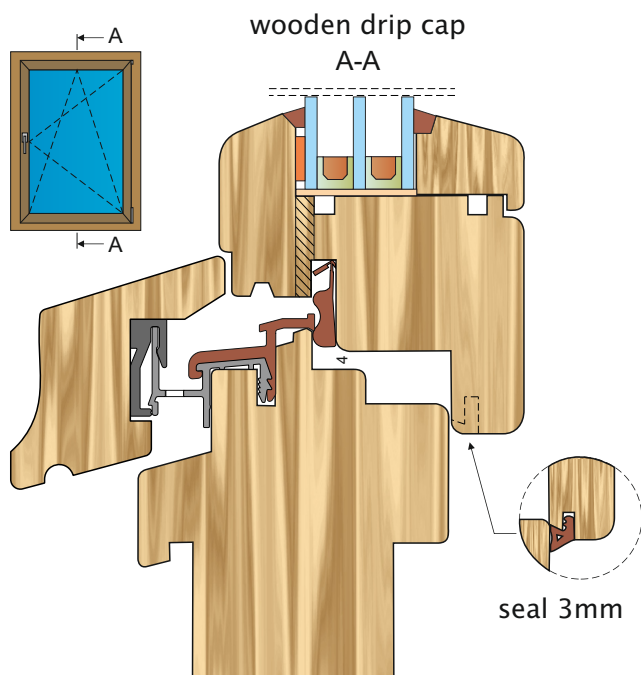
Window connection with a post

C-C

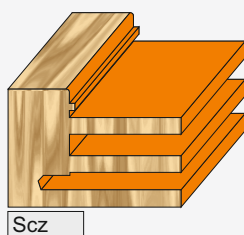
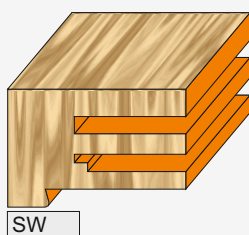
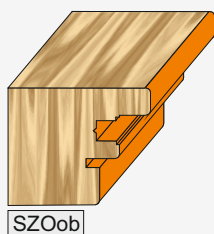
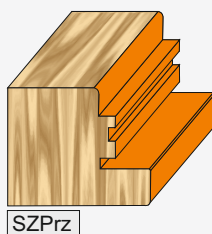
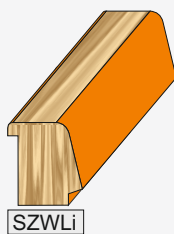
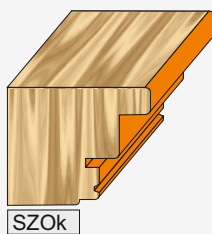
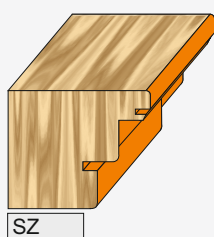
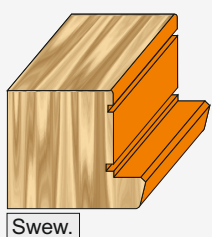


In addition to the items directory tools made to individual order.
The term of up to two weeks.

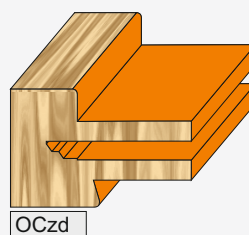
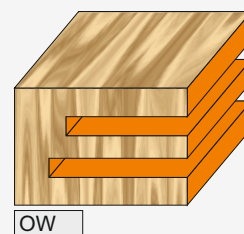
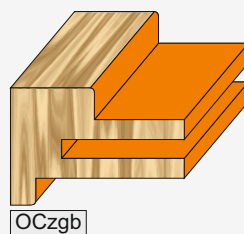
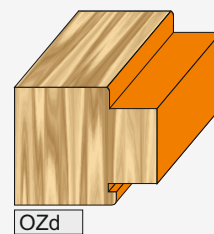
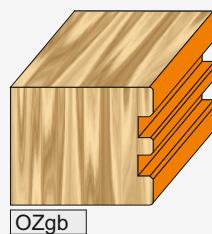
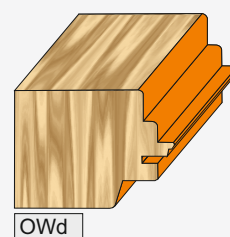
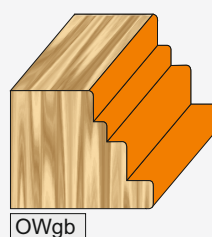
Tolls for Profile Softline R8



Summary profiles for tools – wing



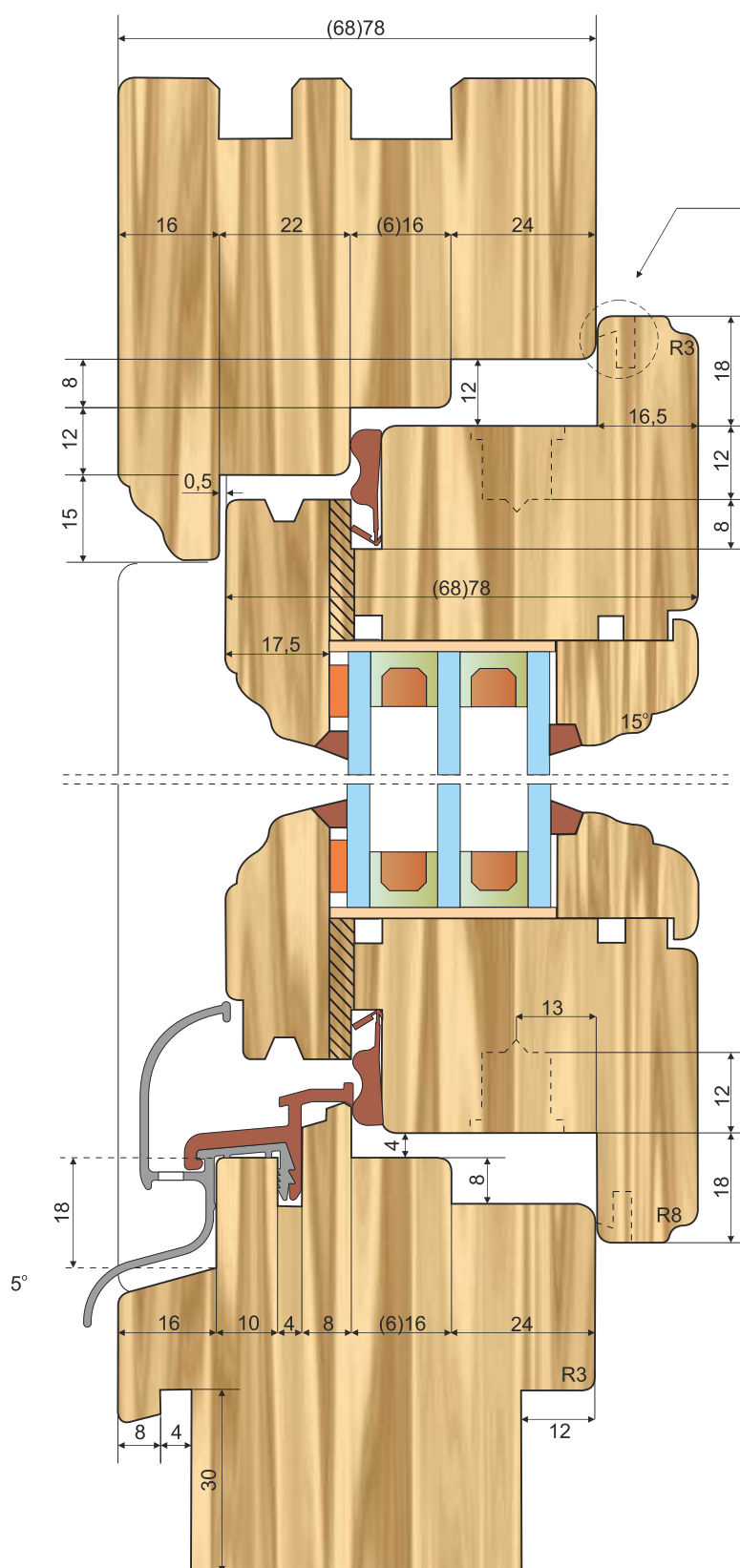
Summary profiles for tools – frame



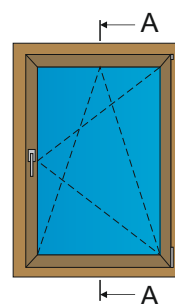
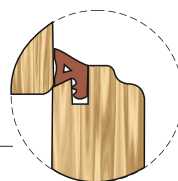
In addition to the items directory tools made to individual order.
The term of up to two weeks.

Tolls for Profile Retro

A-A

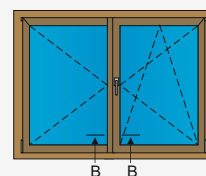
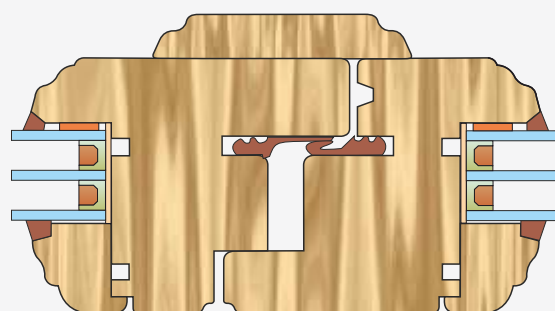


seal 3mm



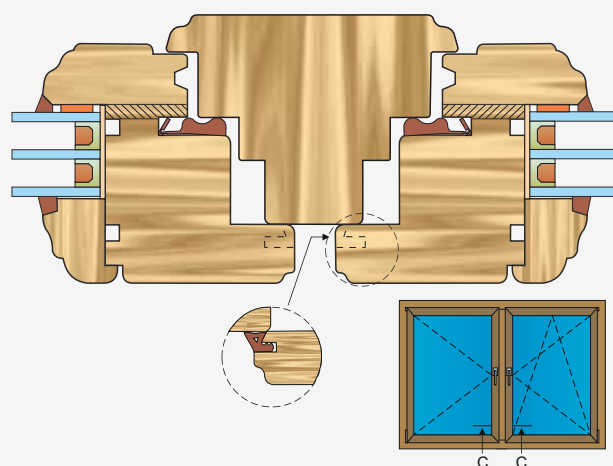
The combination of a window without bars (closes)

B-B



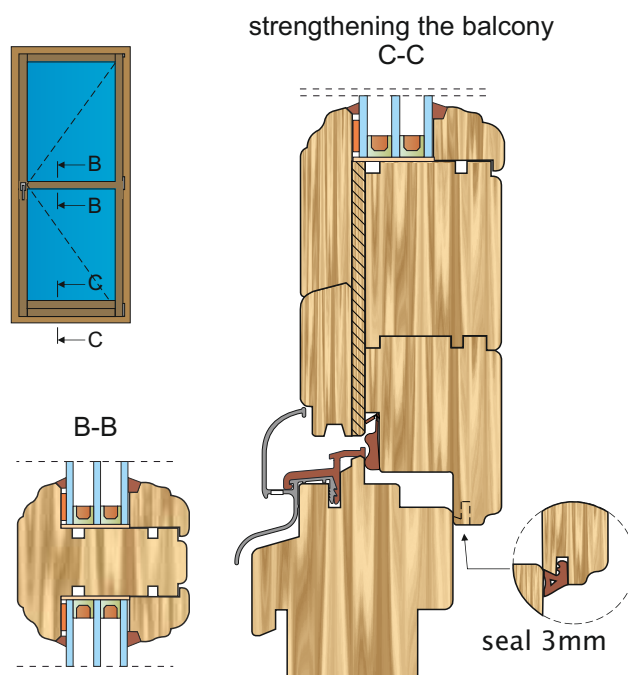
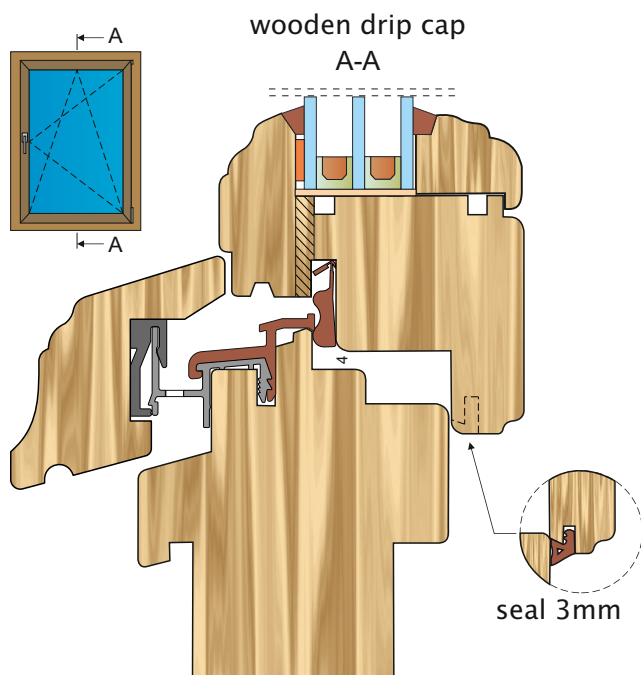
Window connection with a post

C-C

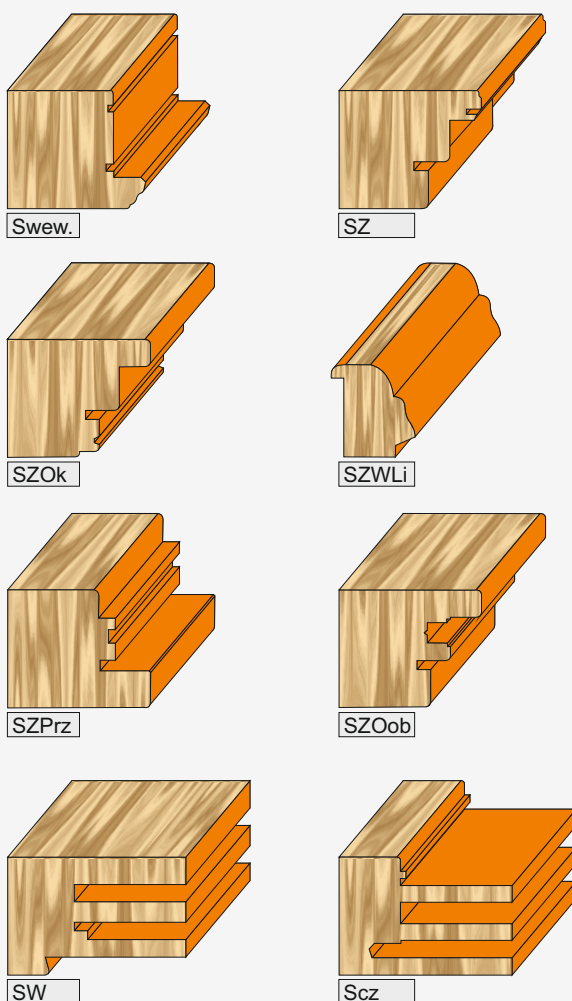


In addition to the items directory tools made to individual order.
The term of up to two weeks.

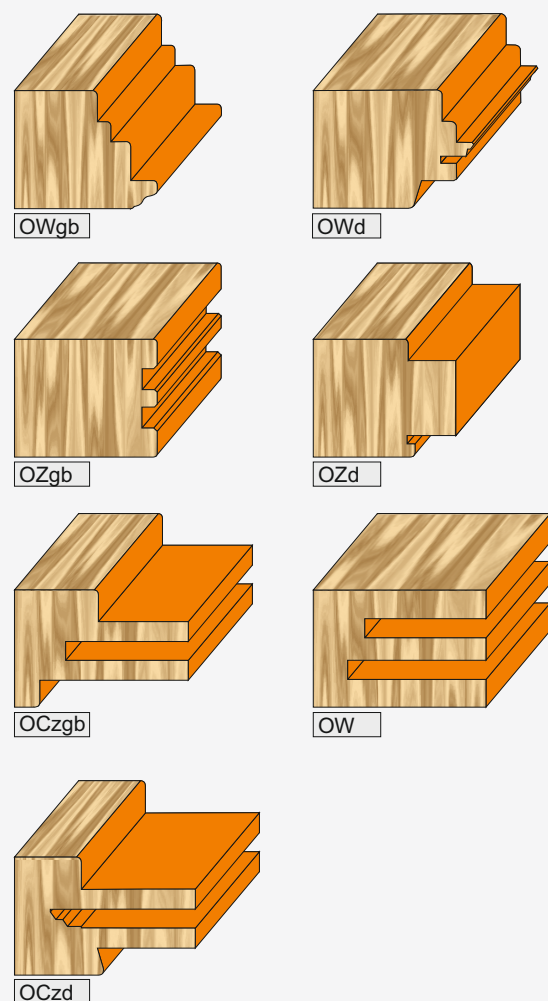
Tolls for Profile Retro



Summary profiles for tools – wing



Summary profiles for tools – frame



In addition to the items directory tools made to individual order.
he term of up to two weeks.

Tolls for passive wood/ wood-aluminium windows

To meet the trend of reducing the heat transfer coefficients carpentry and joinery, we offer you the tools for windows pasywnych wooden and aluminum-wood with the highest performance insulation.

Wooden windows :

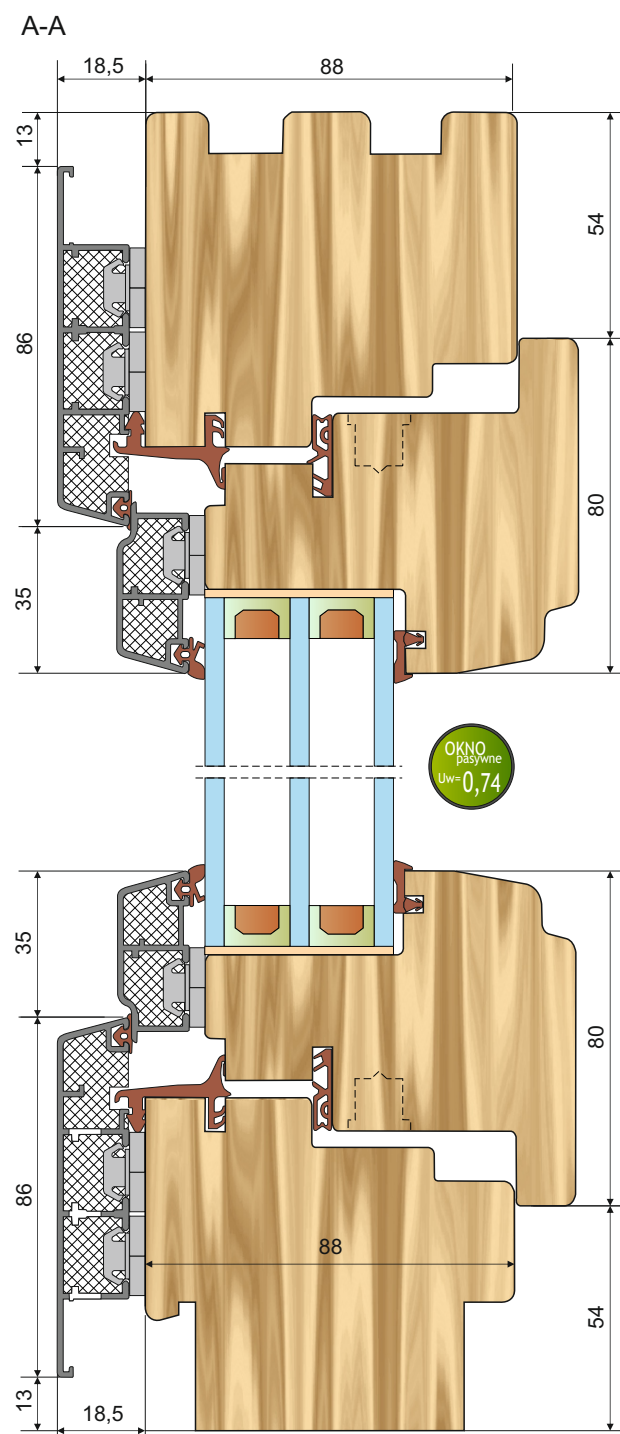
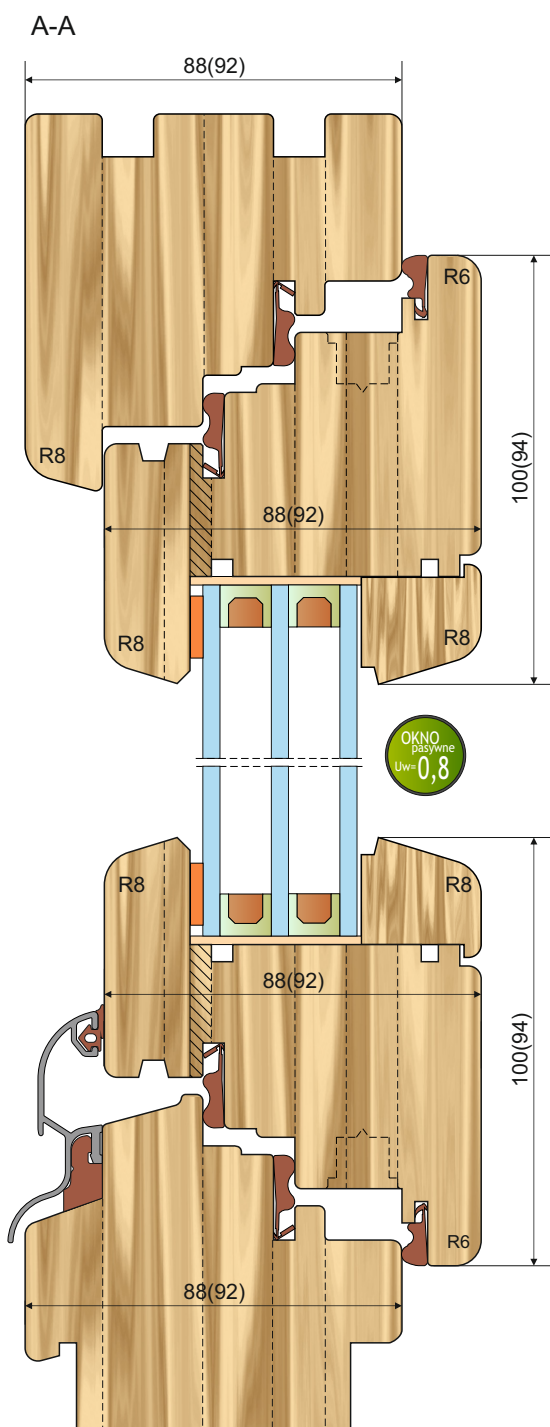
weather bar Aluroz AWZ 14/22

- triple-glazed unit providing excellent thermal and acoustic insulation
- frame and sash made from solid wood
- aluminium weather bar for moisture protection

Wooden-aluminium windows :

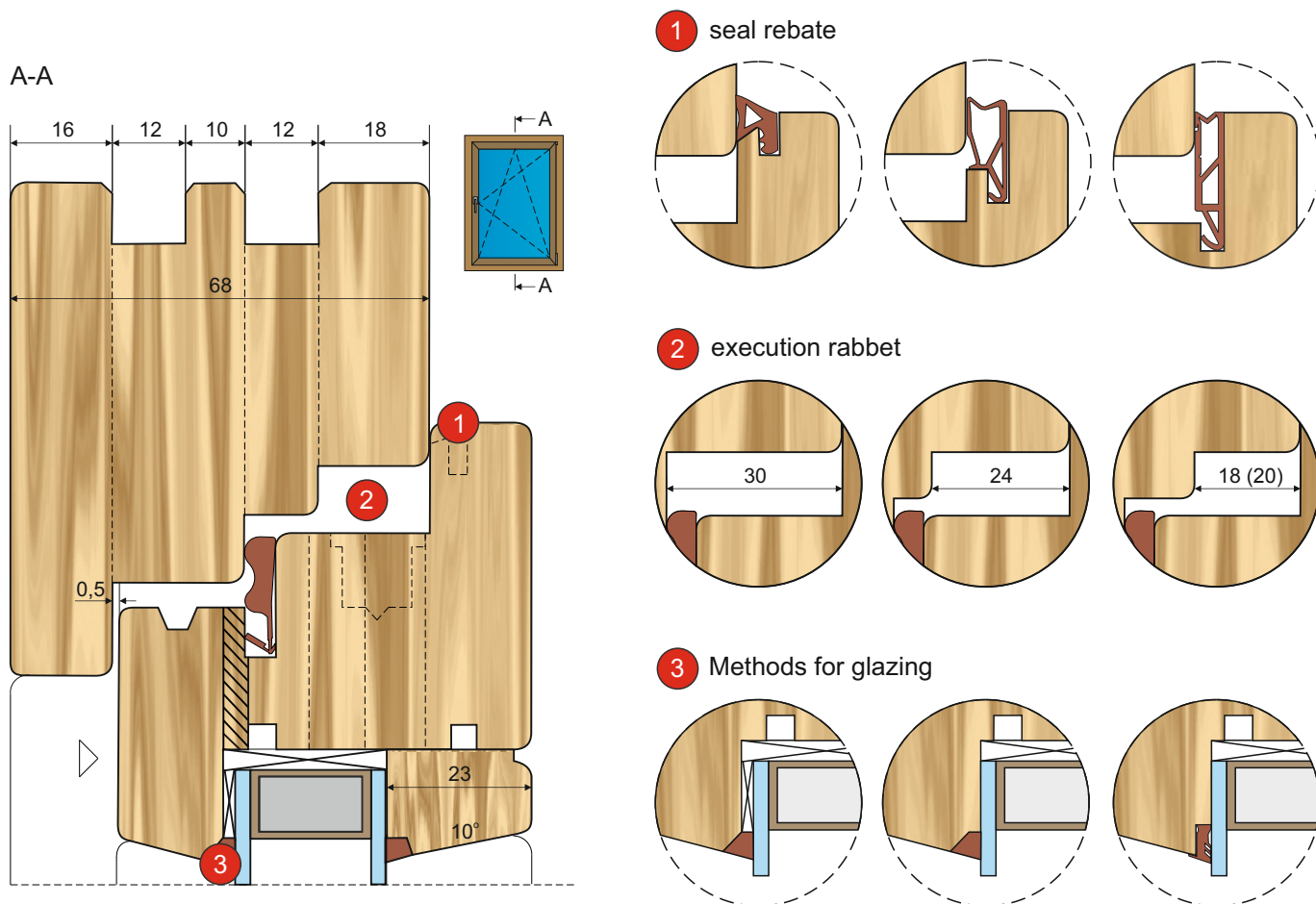
system Gemini ThermoClassic

- triple-glazed unit providing excellent thermal and acoustic insulation
- no risk of degradation of wood (no need for renovation)
- unlimited range of colours, structures and gloss



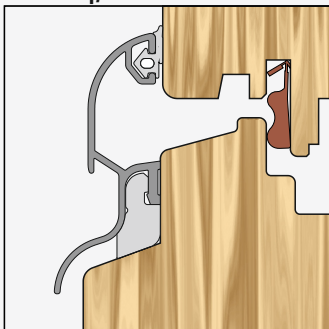
In addition to the items directory tools made to individual order.
The term of up to two weeks.

Characteristics of wooden windows

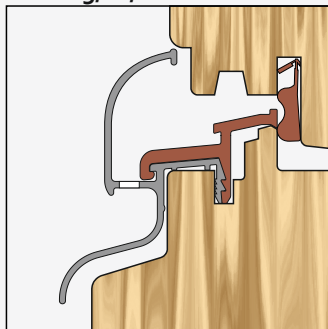


types of drip

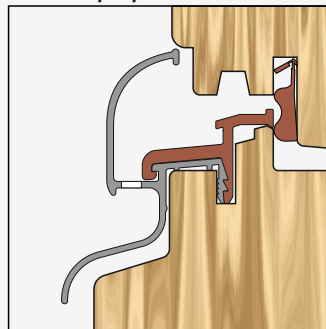
AWZ 14/22



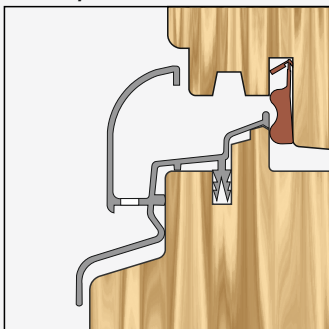
ATW 25/21/21



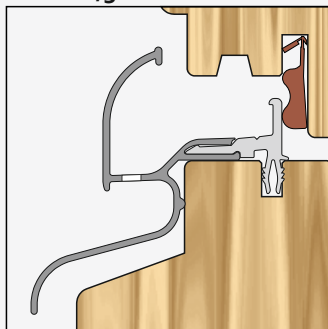
ATW 22/21/18



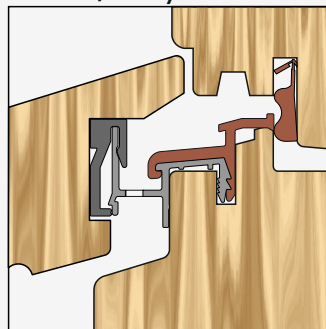
AW 22/21



ATW 22/30



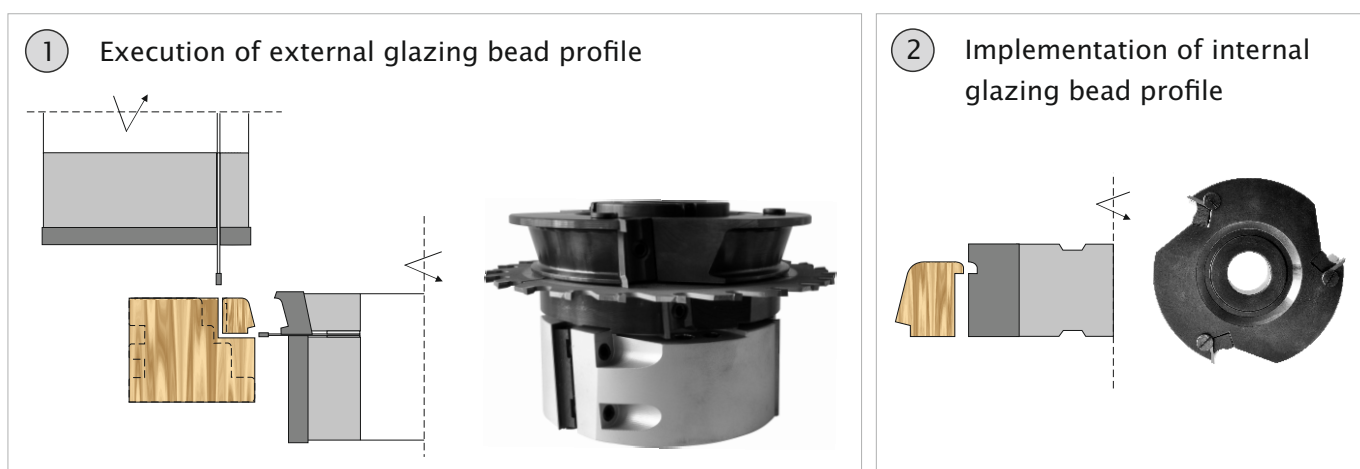
ATW 22/18 Styl



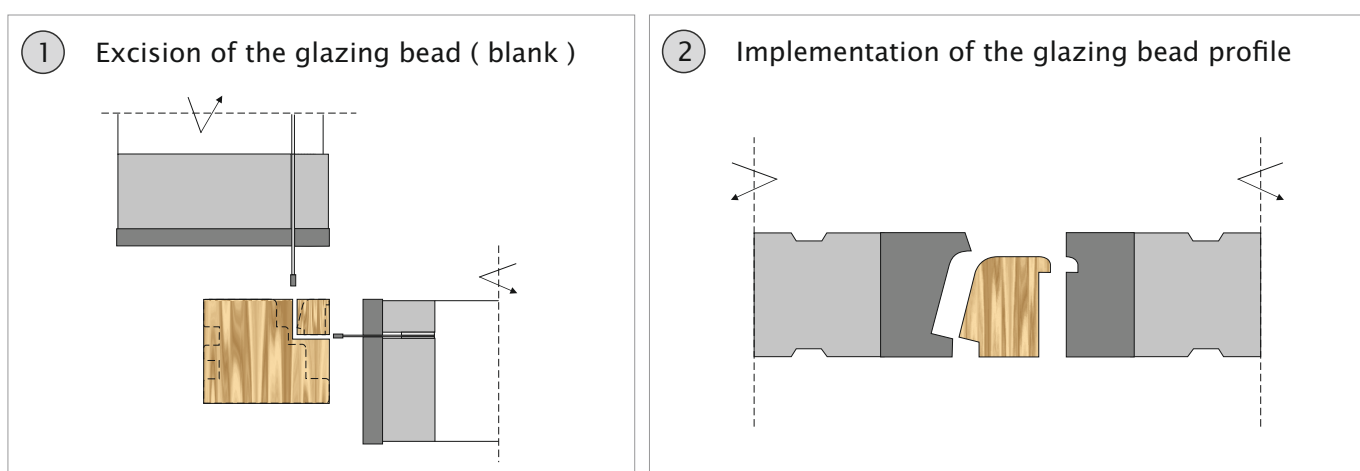
In addition to the items directory tools made to individual order.
The term of up to two weeks.

Characteristics of wooden windows

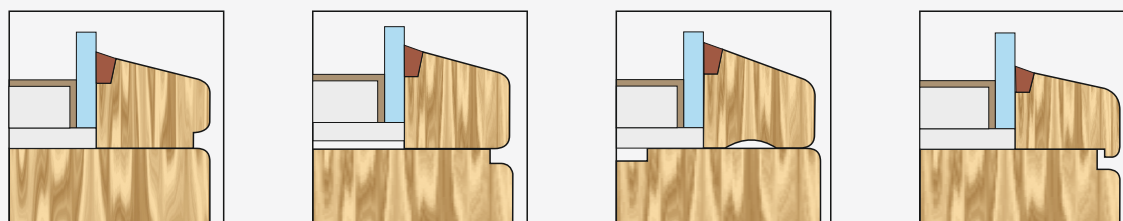
Implementation of the glazing bead – Option 1



Implementation of the glazing bead – Option 2

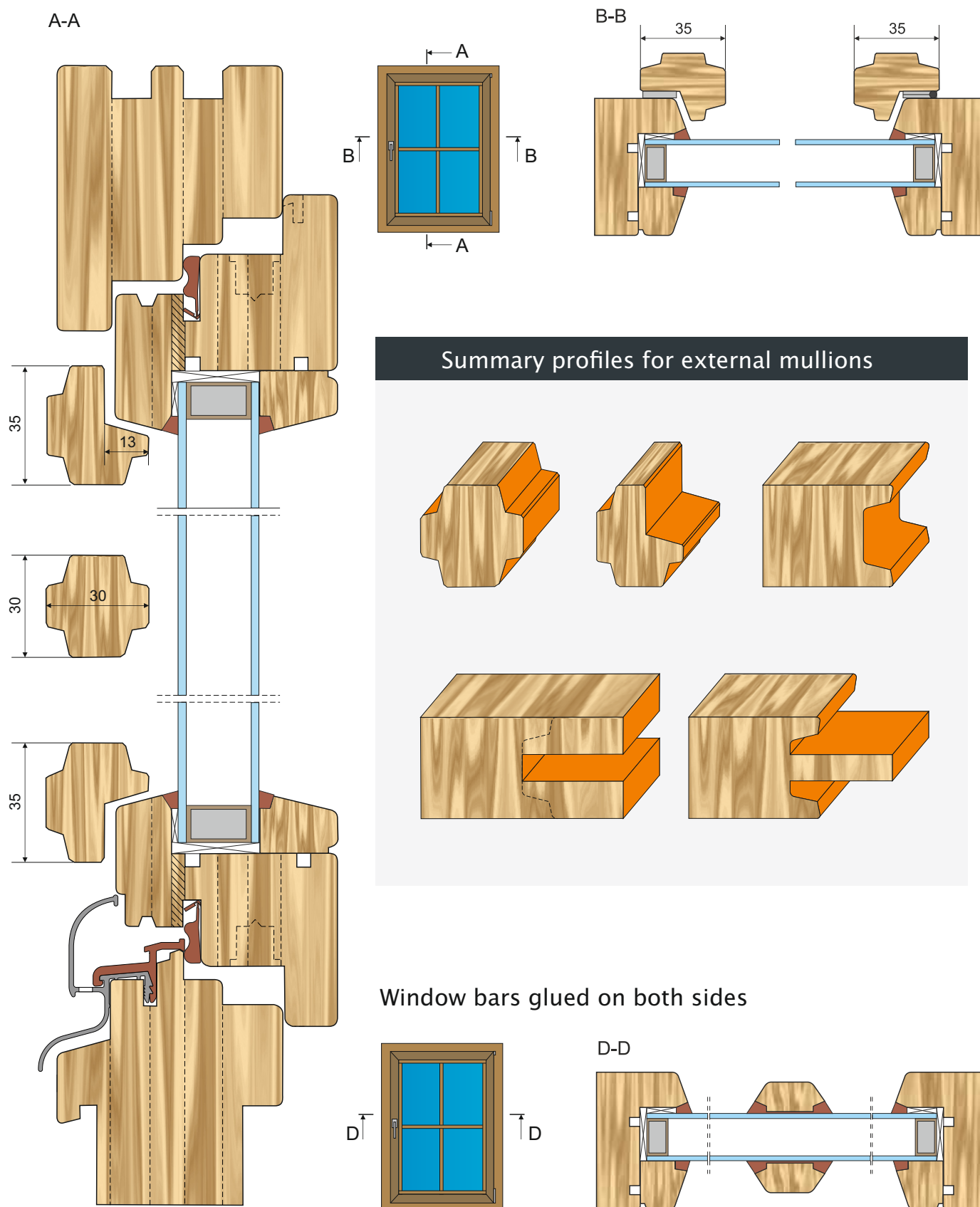


Embodiments of the glazing bead



In addition to the items directory tools made to individual order.
The term of up to two weeks.

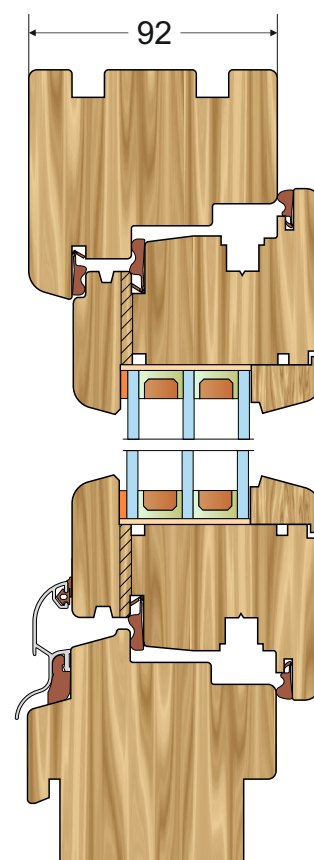
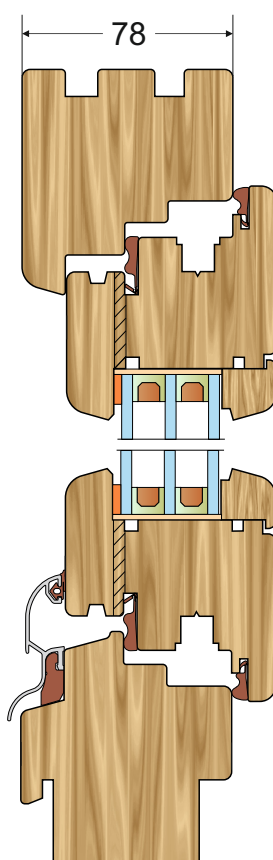
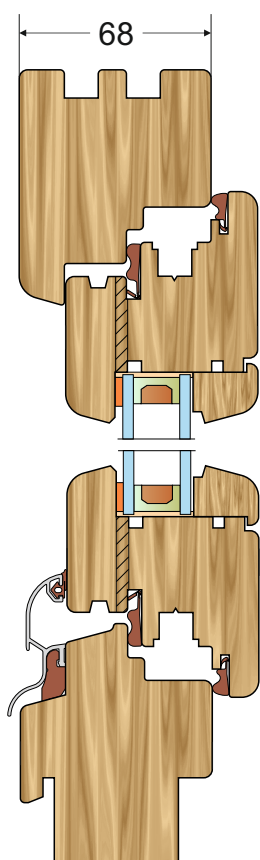
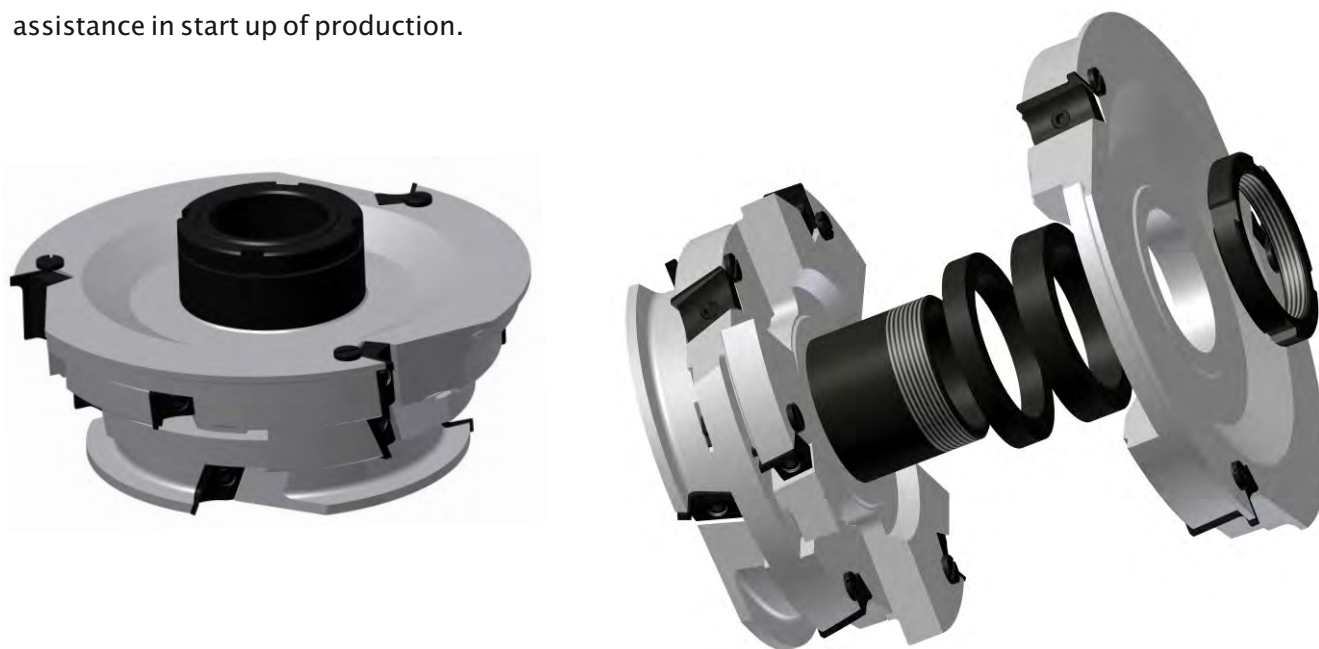
External mullions and stucked



In addition to the items directory tools made to individual order.
The term of up to two weeks.

Adjustable WP cutter heads windows production 68–78–92

By using a shared sleeve and spacers, one head can be used to make three window profiles with rail width equal to 68, 78, and 92 mm. Each set of tools is provided with technical documentation that enables problem-free and efficient conversion of the heads for the required profile width. The sets are made taking into account the individual needs of customers and are suitable for their machinery. Also, we offer technical advice and assistance in start up of production.

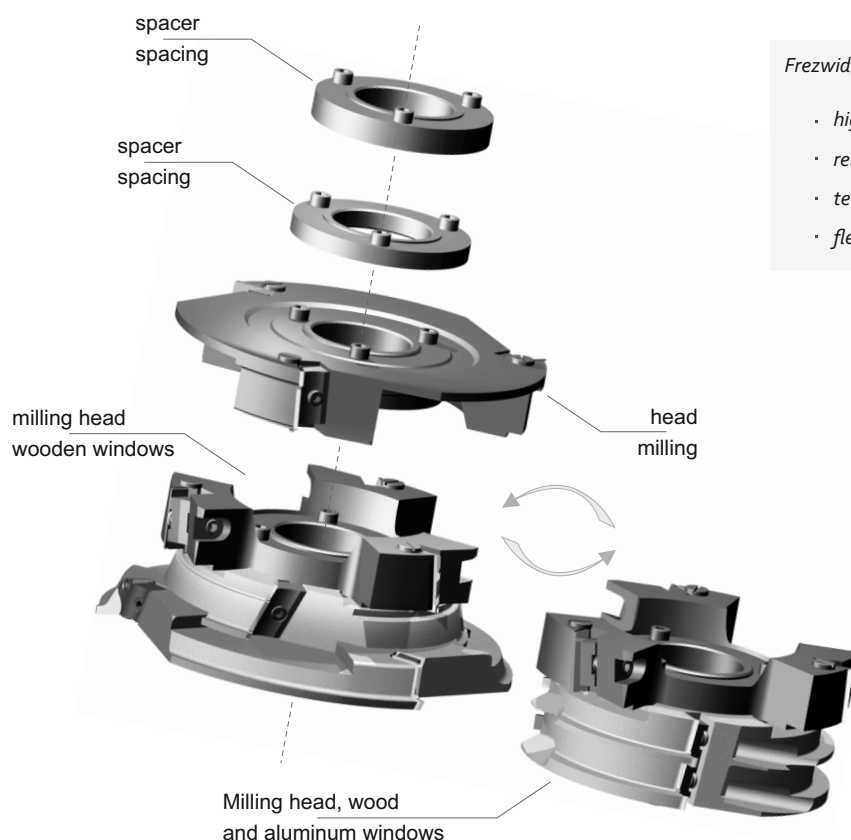


In addition to the items directory tools made to individual order.
The term of up to two weeks.

Smart Set Tools

The innovative solutions used in the SMART SET TOOLS enable quick and easy change of profiles of wooden or aluminium-wooden windows. The use of a complete set of heads enables production of at least twelve types of windows.

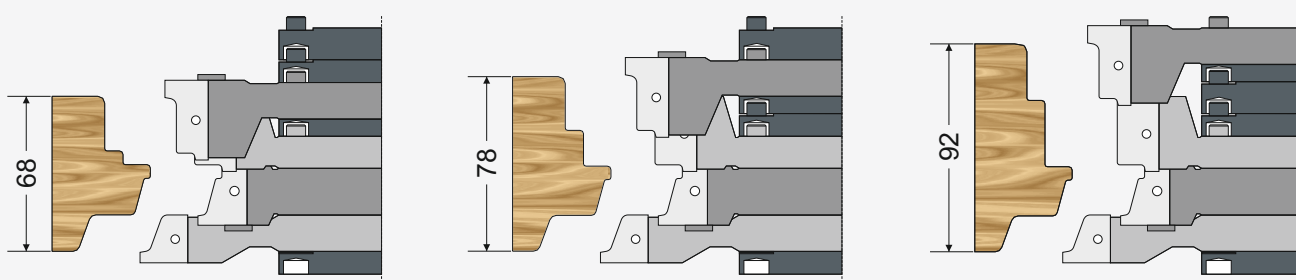
An example of a set of head Smart Set Tools



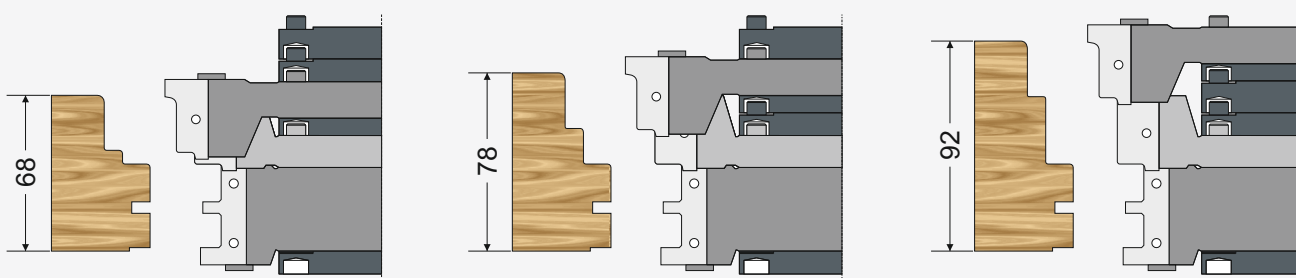
Frezwid 's tools is a guarantee :

- *high-quality*
- *reliability*
- *technical support*
- *flexibility*

wooden windows



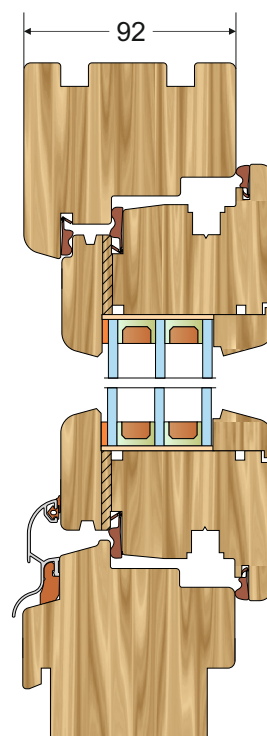
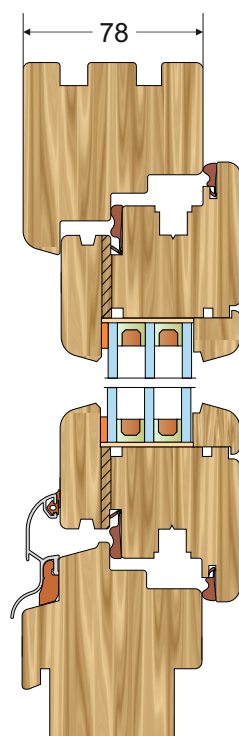
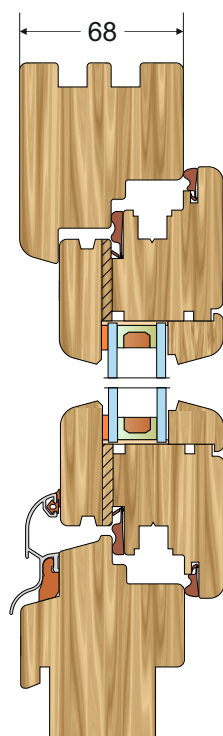
aluminum windows



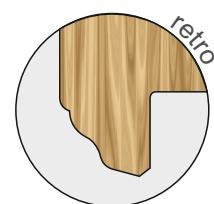
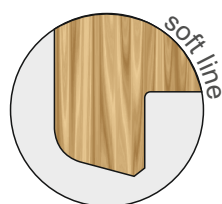
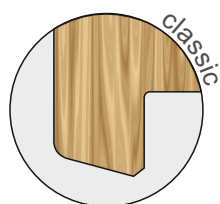
In addition to the items directory tools made to individual order.
The term of up to two weeks.

Smart Set Tools

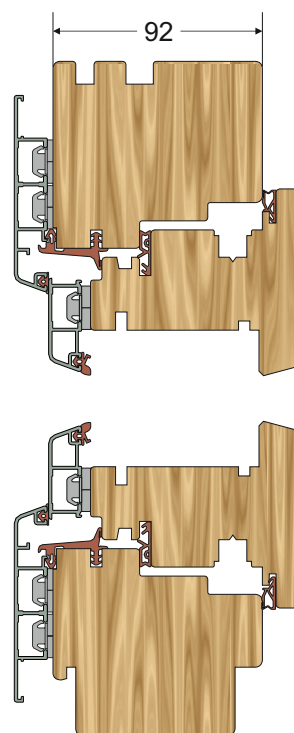
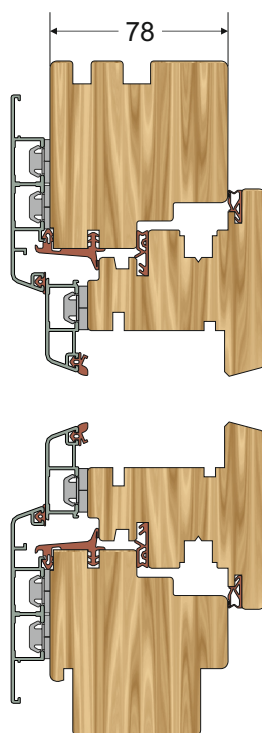
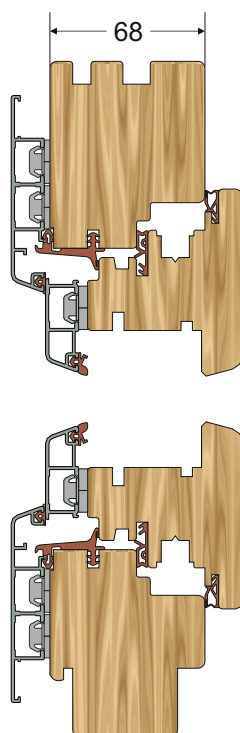
Wooden windows



Profiles



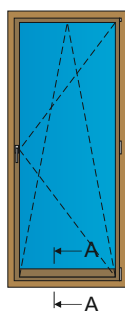
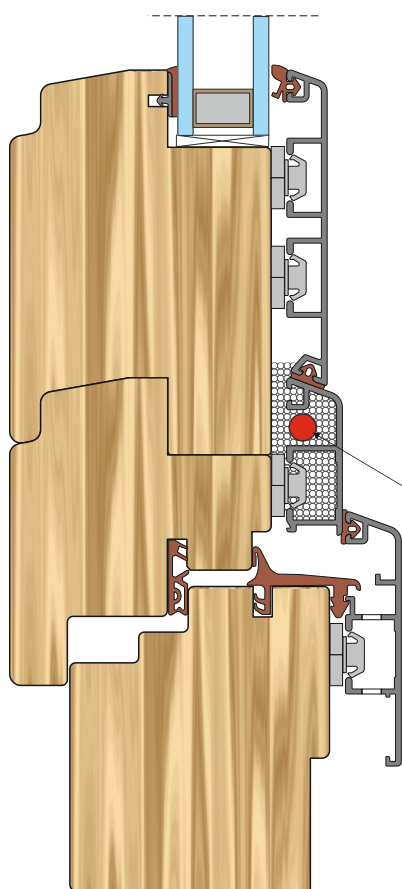
Aluminium windows



In addition to the items directory tools made to individual order.
The term of up to two weeks.

Wooden -Aluminium windows system Aluron Gemini

A-A



optional thermal insulator improves the thermal property

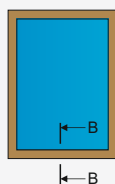
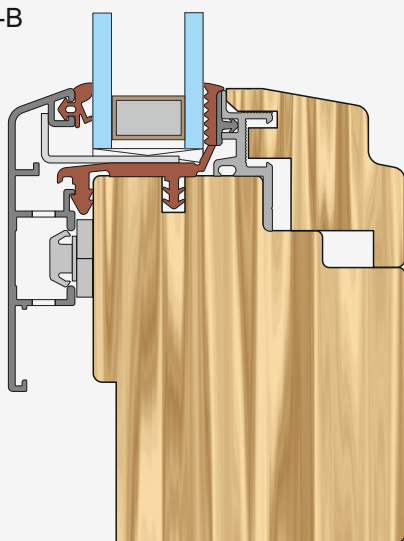
Greater energy savings - thanks to the possibility of filling the chambers of aluminum profiles thermal insulator provide additional protection from chilling air circulation.

Better acoustic properties - increased number of seals and the use of an insulator inside aluminum profiles greatly improves sound absorption window design.



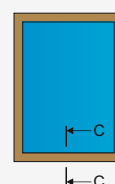
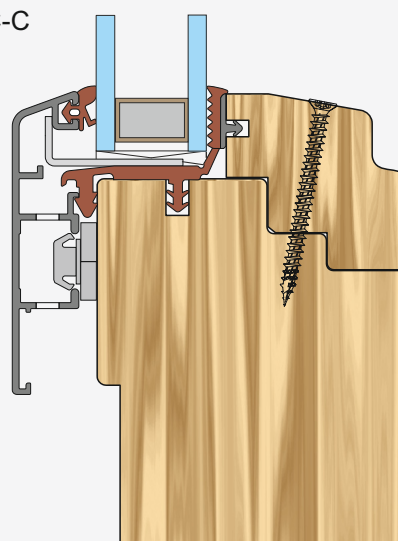
Fixed Glazing – a variant of the mounting strip

B-B



Glazing Fixed – variant with terminal screwed

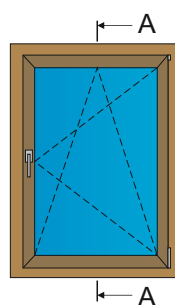
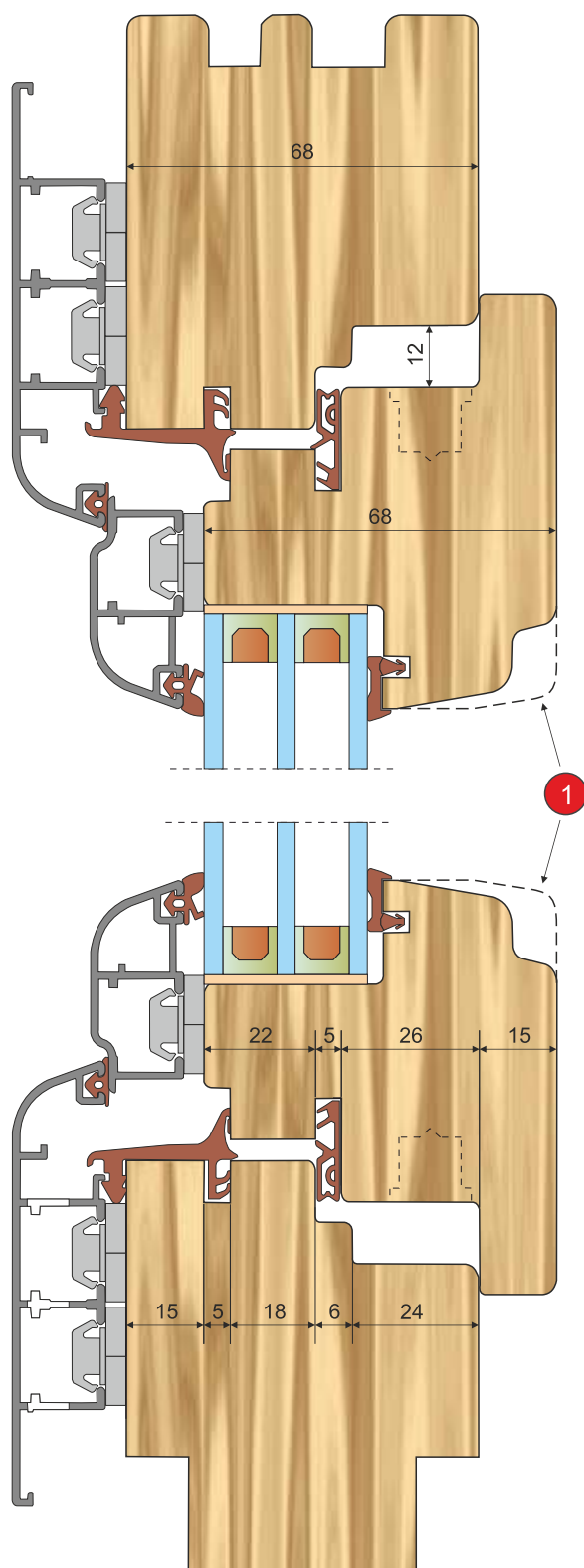
C-C



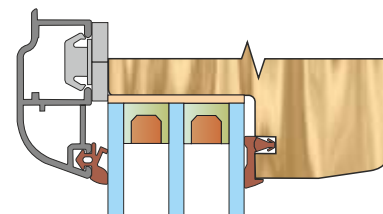
In addition to the items directory tools made to individual order.
The term of up to two weeks.

Wooden -Aluminium windows system Aluron Gemini

A-A

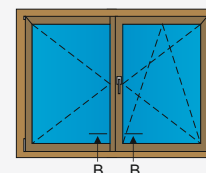
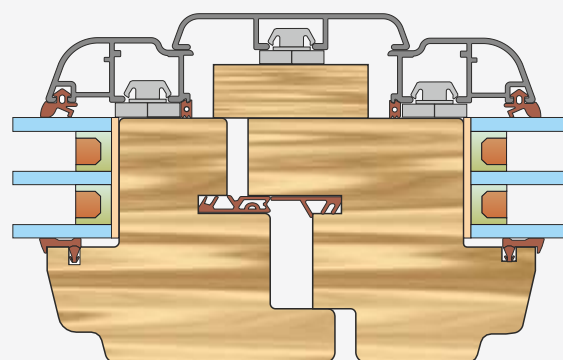


1 Optional finishing profile



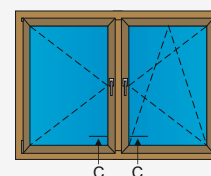
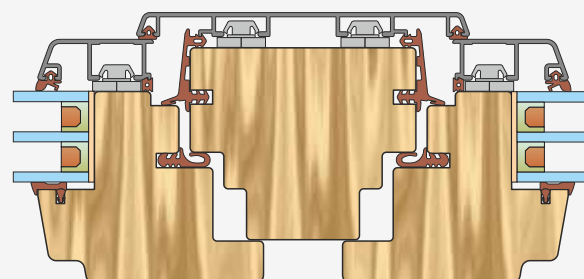
The combination of a window without bars (closes)

B-B



Window connection with a post

C-C



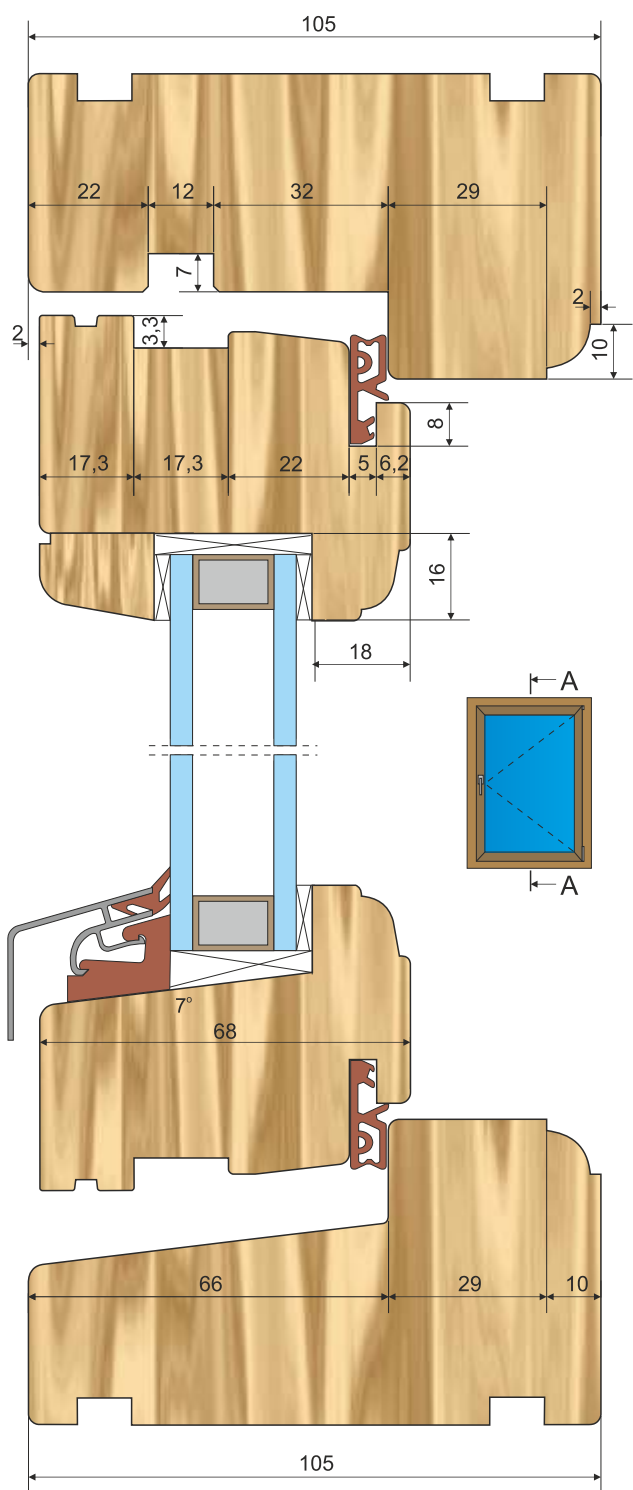
In addition to the items directory tools made to individual order.
The term of up to two weeks.

Wooden Scandinavian windows – weather bar Aluron AW 26

Scandinavian windows are characterized by a non-standard design that enables quick opening of the sash to the outside and turning it vertically and horizontally by 180 degrees. The main advantages of this type of windows are:

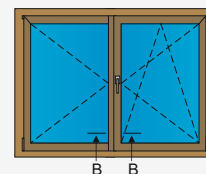
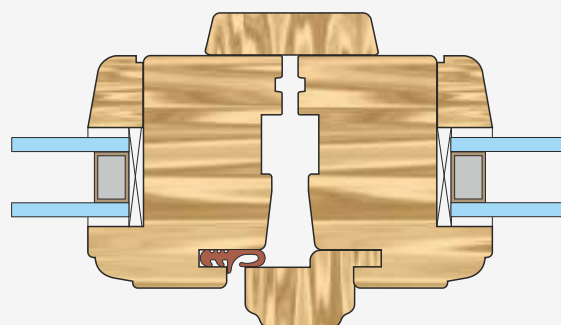
- tightness (especially in regions with high winds, the sash is pressed against the frame by the wind);
- security (it is much harder to break the window out);
- convenient use (the rotating sash significantly facilitates washing the outside of the window).

A-A An example of the type of profile for windows IPA



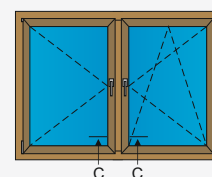
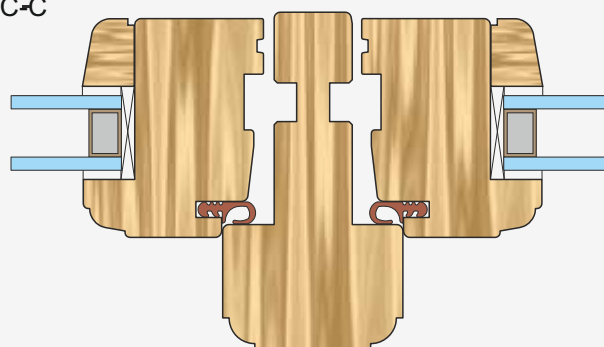
The combination of a window without bars (closes)

B-B



Window connection with a post

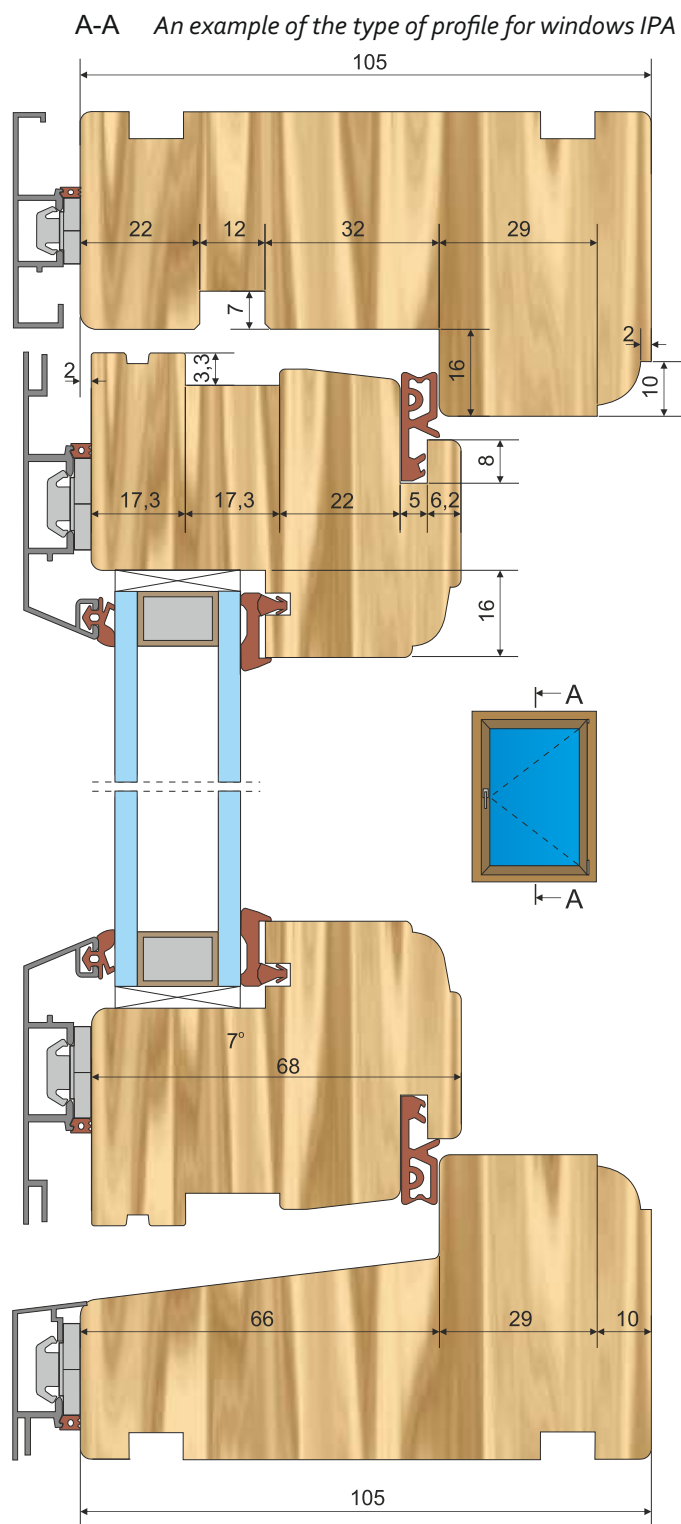
C-C



In addition to the items directory tools made to individual order.
The term of up to two weeks.

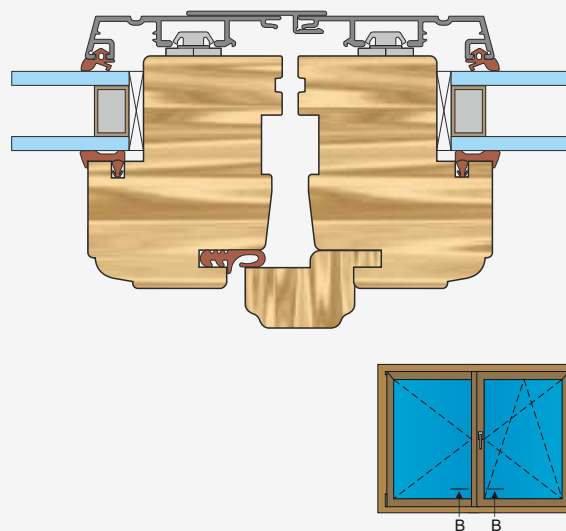
Wooden -aluminium Scandinavian windows – Aluron Nordic system

Aluminium-wooden Scandinavian windows - the use of aluminium profiles in Scandinavian windows significantly enhances their resistance to weather conditions and, consequently, virtually eliminates maintenance operations. They are an excellent product for persons who appreciate elegance, simplicity, and timeless style, combined with high quality and functionality.



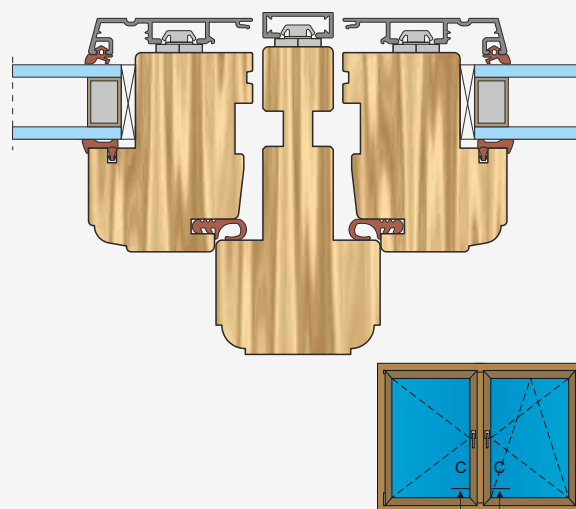
The combination of a window without bars (closes)

B-B



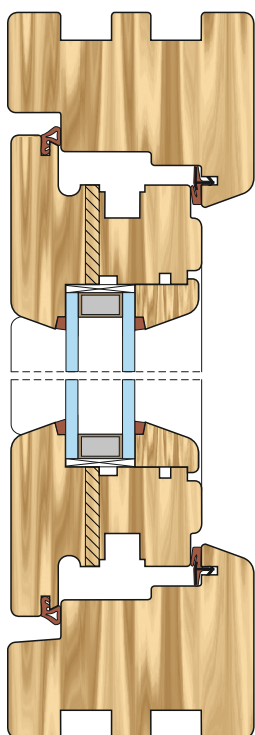
Window connection with a post

C-C

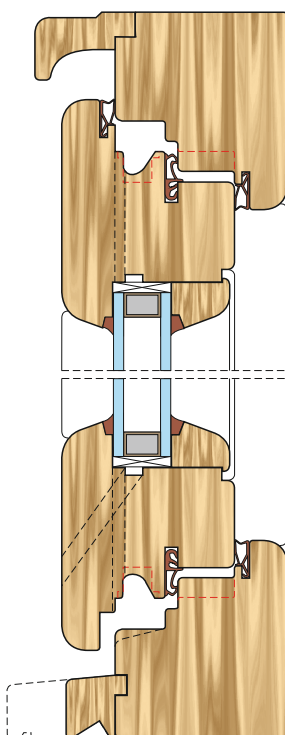


In addition to the items directory tools made to individual order.
The term of up to two weeks.

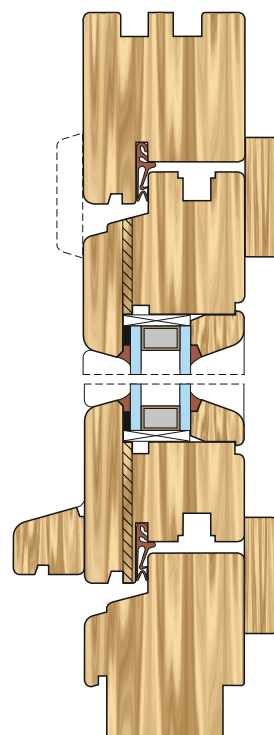
window Types



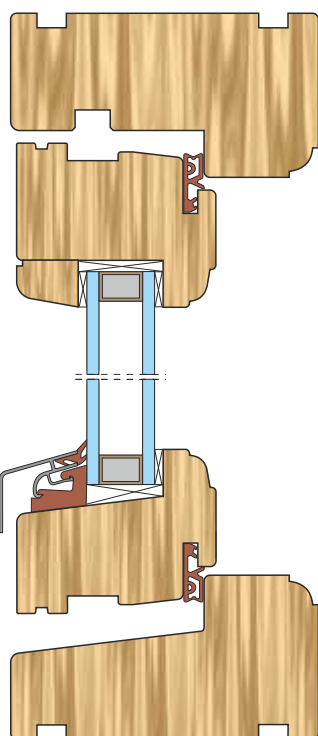
*The window opening to the outside
typical for the UK*



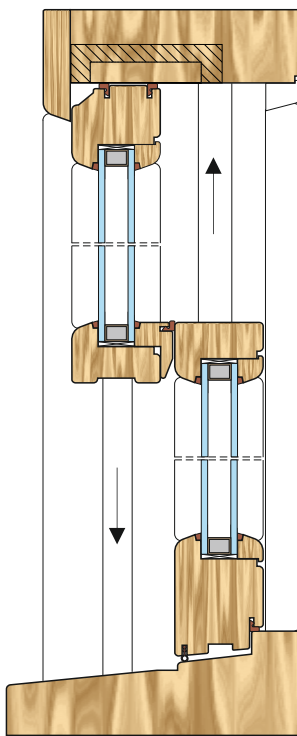
*The window opening to the outside
typical for the UK*



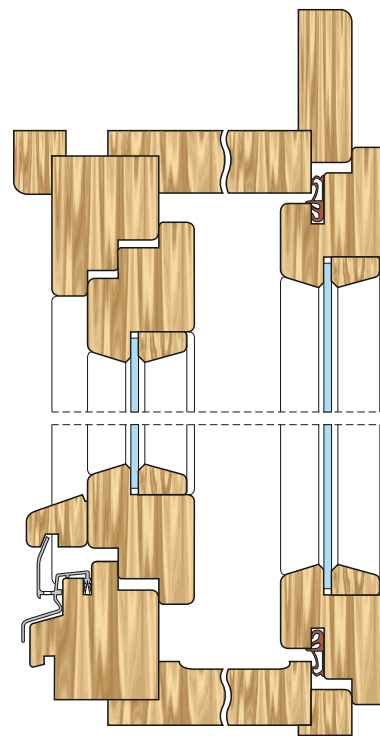
*pivot window
typical for Eastern Europe*



*Scandinavian window
opening to the outside*



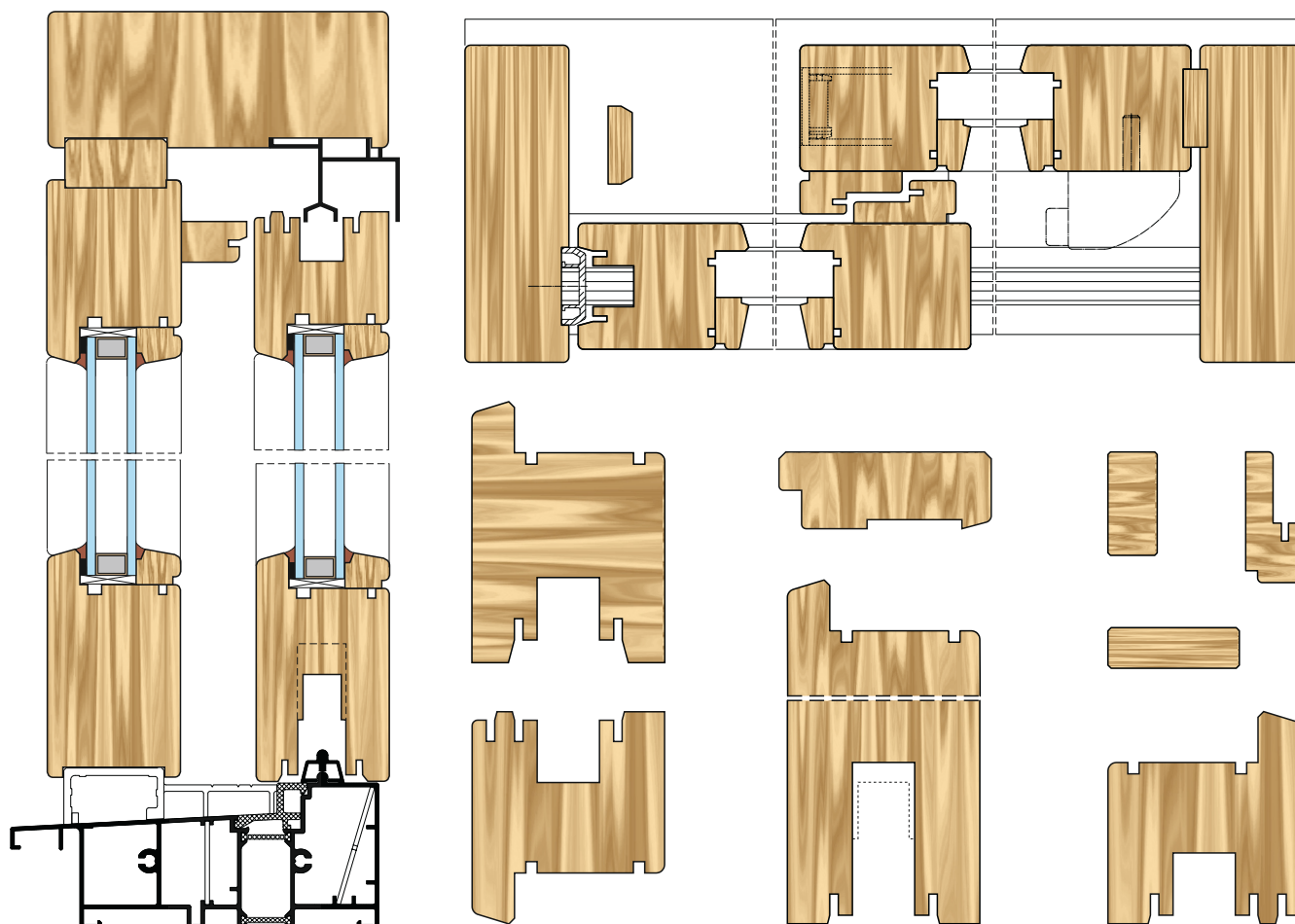
*Vertical sliding window
typical for the UK and the US*



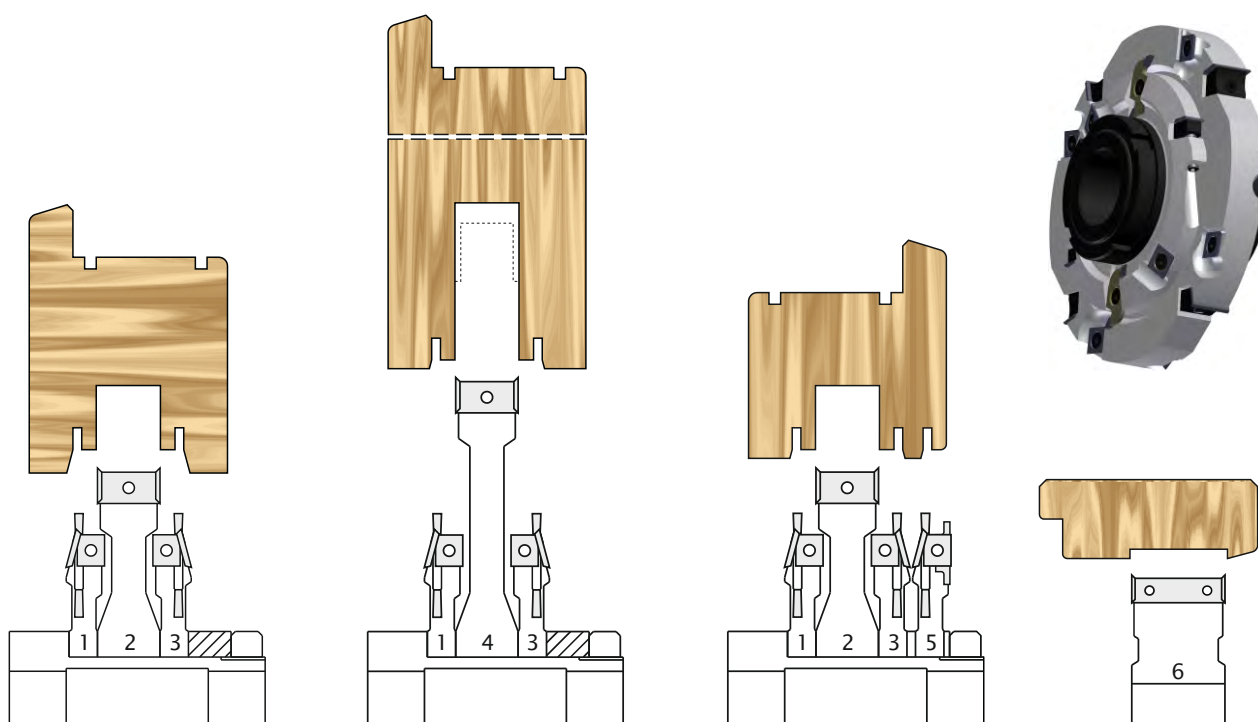
*window box
typical for Central Europe*

In addition to the items directory tools made to individual order.
The term of up to two weeks.

HS sliding system

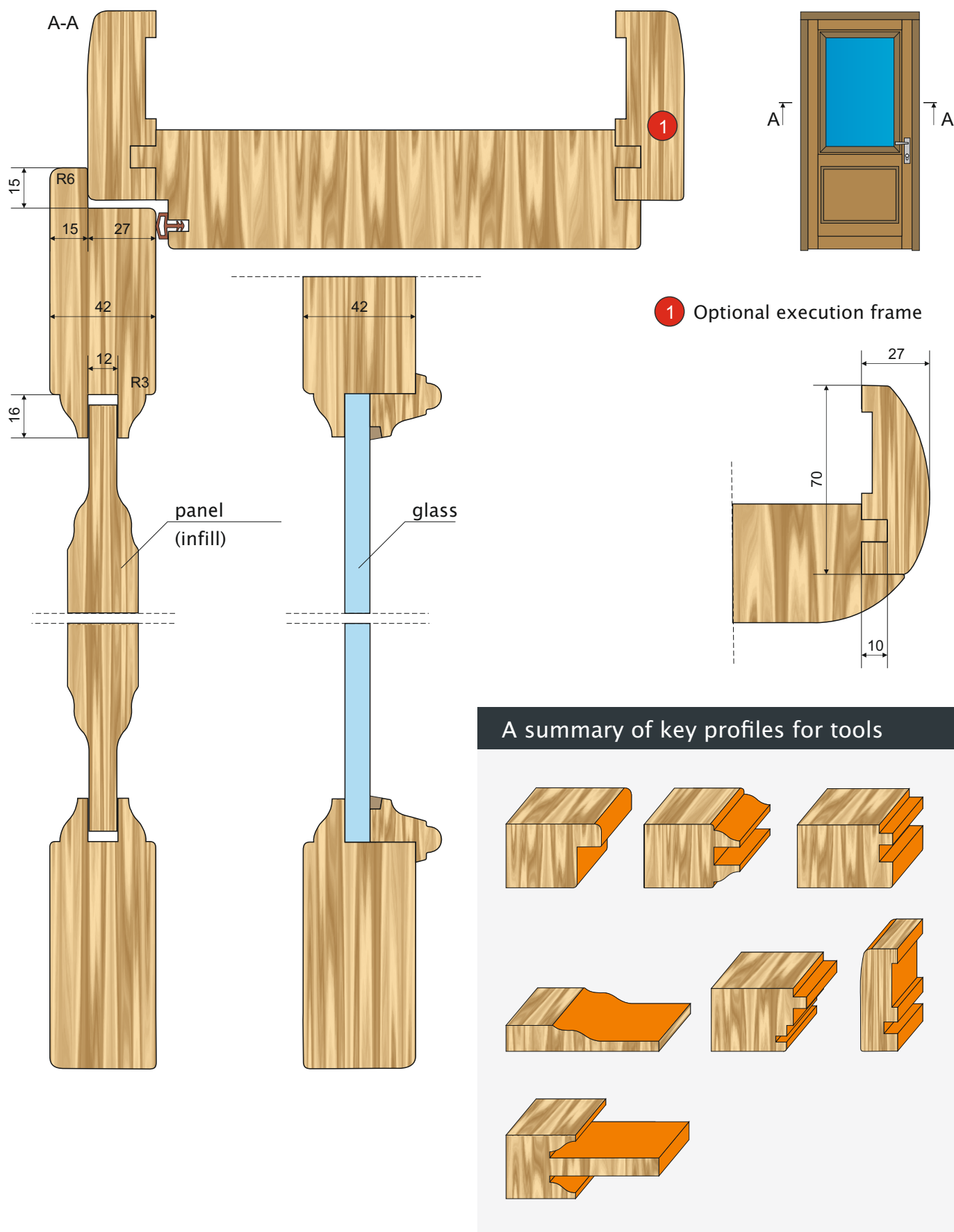


The basic set of tools for the production of profiles sliding system HS



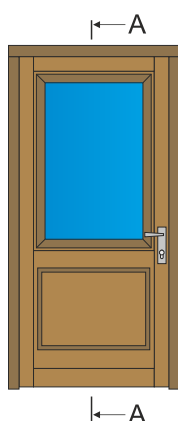
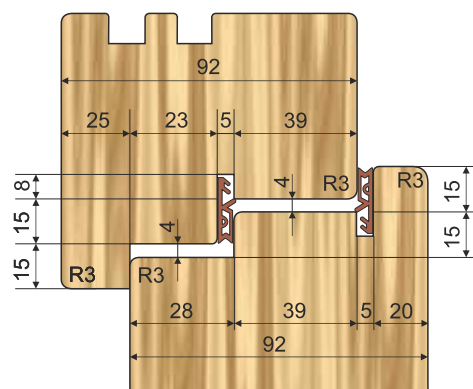
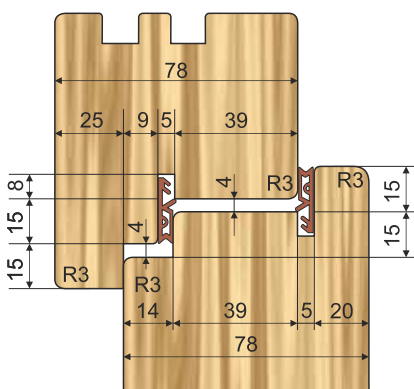
In addition to the items directory tools made to individual order.
The term of up to two weeks.

Internal doors with frames



In addition to the items directory tools made to individual order.
The term of up to two weeks.

The technical drawing illustrates the cross-section of a door threshold assembly. The main component is a wooden threshold with a total width of 68 mm. It features a central channel for a metal track, which is shown in two views: a top view and a side view. The top view shows the threshold with a central channel of width 29 mm, flanked by sections of 25 mm and 29 mm. The side view shows the threshold with a height of 15 mm and a central channel depth of 4 mm. The threshold is secured with screws and has a metal track embedded in its center. The bottom view shows the threshold with a central channel of width 68 mm and a height of 15 mm. The threshold is labeled with R3 and R6, indicating specific radii or materials.

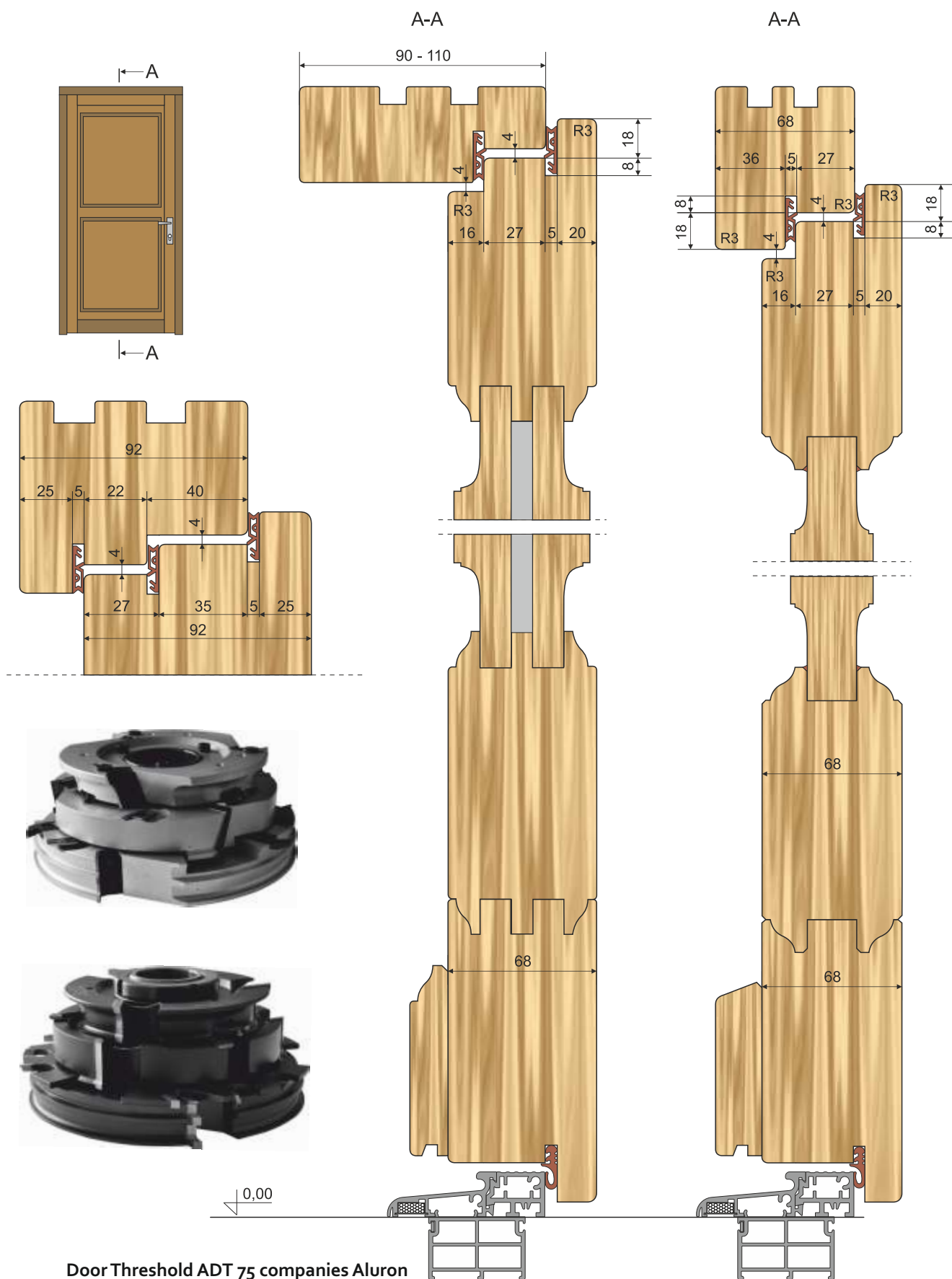


The image displays six 3D perspective drawings of rectangular blocks, each with a different notch or groove cut into its top surface. The blocks are light brown with a wood grain texture, and the cut surfaces are colored orange. The cuts are as follows:

- Top Left:** A block with a single rectangular notch cut from the top right corner.
- Top Right:** A block with a rectangular notch cut from the top right corner, but the notch is deeper and wider, extending further into the block.
- Middle Left:** A block with a rectangular notch cut from the top right corner, similar to the top left but with a slightly different depth.
- Middle Right:** A block with a rectangular notch cut from the top right corner, similar to the top right but with a different depth.
- Bottom Left:** A block with a rectangular notch cut from the top right corner, similar to the middle left but with a different depth.
- Bottom Right:** A block with a rectangular notch cut from the top right corner, similar to the middle right but with a different depth.

Door Threshold AD 66 companies Aluron

External doors



In addition to the items directory tools made to individual order.
The term of up to two weeks.